



OCTOBER 2023

TISHRI - CHESHVAN 5784



JRLW

MEGILLAH

PLEASE VISIT THE JRLW WEB SITE - www.jrlwmd.org

PRESIDENT: Joel Kristal
photosbj@gmail.com

MEGILLAH EDITOR: Bernice Cohen
bernicecohen1@gmail.com



JOEL L. KRISTAL

FROM THE DESK OF THE PRESIDENT

Yasher Koach to everyone who participated in our Rosh Hashanah Services and who will participate in our Yom Kippur Services. Special thanks to Ellyn Kaufman and Harold Geetter for arranging the logistics that make our services run so well and, of course, to our Clergy and choir. To those many, many others, without whom our services could not happen. Thank you. You are our unsung heroes and heroines.

I'm guessing you will receive the Megillah before Yom Kippur, this will give us a few days before the Days of Awe (Yamim Noraim) or the Days of Repentance. This is a time for serious introspection, a time to consider the mistakes of the previous year and repent before Yom Kippur. For all those I may have offended during the past year, I apologize.

Let me think about Sukkot, perhaps my favorite Jewish Holiday. A time to visit our Succah, have a small nosh (don't forget the Blessings), kibbutz with friends, and participate in the lulav and esrog mitzvah.

CONTINUED ON PAGE 2

OCTOBER DATES 2023

- 07 Sat - Shemini Atzeret Service /Yizkor
- 14 Sun - Service
- 15 Sun - JRLW Brunch
- 18 Wed - JRLW Golf Outing 9:15 am
- 22 Sun - JRLW Israeli Dancers 2 - 4 pm
- 25 Wed - Jewish Capitol Museum bus trip/JCC
- 30 Wed - JRLW/JCC Movie - Exodus 91

RELIGIOUS SERVICES FOR OCTOBER

On Friday, October 4, we will have Reform Shabbat Services, in Clubhouse II at 7:30 pm. The services will be conducted by Rabbi Gary Fink and Cantor Wendy Gonzales. Our Shir Delight Choir will perform. There will be an Oneg following Services.

There will be a Shabbat Service on Saturday, October 14, in Clubhouse II at 9:15 am. Cantor Mike Kravitz will conduct these services. There will be a Kiddush afterwards.



GRANDPARENTS HOLD YOUR BRAGGING!

In December, we will have our GRANDPARENTS QVELLING column. See you then!



President's Message

CONTINUED FROM PAGE 1

As is my custom, I like to include a few thoughts from Rabbi Jonathan Sacks, of blessed memory (taken from various sources).

"Succot represents more clearly than any other festival the dualities of Judaism. The four species (lulav, etrog, hadassim and aravot) are a symbol of the land of Israel, while the sukkah reminds us of exile. The four species are a ritual of rain, while eating in the sukkah depends on the absence of rain."

"... the meaning of Succot as a whole. It is a festival of simple things. It is, Jewishly, the time we come closer to nature than any other, sitting in a hut with only leaves for a roof, and taking in our hands the unprocessed fruits It is a time when we briefly liberate ourselves from the sophisticated pleasures of the city and the processed artifacts of a technological age...."

"When we sit in the sukkah, we recall Jewish history – not just the 40 years of wandering in the wilderness, but also the entire experience of exile. The sukkah is defined as a "temporary dwelling". It is the most powerful symbol of Jewish history. No other nation could see its home not as a castle, a fortress or a triumphal arch, but as a fragile tabernacle. No other nation was born not in its land, but in the desert. Far from being universalistic, Sukkot is intensely particularistic, the festival of a people like no other, whose only protection was its faith in the sheltering wings of the Divine Presence."

In closing, JRLW depends on volunteers to provide our programs. This month, we are specifically seeking a few people to support our Shiva minyans and our Sunday Brunch. Please look for our "Needs Ad" in the Megillah. Without a few more volunteers, these functions could disappear.

For those who are able to fast on Yom Kippur, I wish you an easy fast.

Shalom

JEWISH WAR VETERANS**KRIEGER-LOUBE POST 567**

Jerome Cohen

The next members' monthly business meeting will be on Wednesday, October 4, 2023, at 11 am via Zoom video and telephone conferencing. Former, current and prospective members are invited to participate in these friendly and welcoming meetings. Zoom instructions will be provided separately to all members a day or two prior to the meeting.

Happy October birthday wishes to Post member and patron, Larry Cohen and to Helene Bass.

Jewish men and women who served honorably during war or peacetime in any branch of the U.S. Military, on active or reserve duty, as national guardsmen, or in the PHSCC or NOAA Corps are eligible to join the Post. All other men and women may apply for Patron membership.

For those who want additional information, have questions about membership, or wish to receive the Post's e-newsletter, contact Post Commander Jerome Cohen at 301-442-4942 or email at jeromeacohen67@outlook.com.

Donations to the Post are appreciated and may be made payable to "JWV 567" and mailed to Dottie Chanil at 3829 Glen Eagles Drive, Silver Spring, MD 20906.



NOTICE: THE DEADLINE FOR THE NOVEMBER MEGILLAH IS OCTOBER 10. ARTICLES SUBMITTED AFTER THAT DATE WILL APPEAR IN THE DECEMBER MEGILLAH.

MEGILLAH STAFF

Bernice Cohen – Editor
 Barbara Cronin
 Sharon Freedman
 Betty Hecht
 Marcia Crystal – Food Editor
 Fred Shapiro- Business Mgr.

THE BEST BAGELS

Bernie Ascher ©

The best bagels come from New York. "It's the water," they will tell you. New York has "soft" water with low concentrations of calcium and magnesium.

Bakers make that tasty round bread with a hole in the middle from flour, salt, water, yeast, and malt. The dough is boiled in water, then baked.

Jewish immigrants from Poland brought the bagel to the United States in the 1800s, but its origin goes back to the 14th century. Towards the end of the 14th century, Polish Queen Jadwiga ate 'obwarzanek', an early variation of the bagel, during Lent.

In the 15th century, Poland granted a monopoly to the Bakers Guild of Kraków to prepare white bread (including the Obwarzanek Krakowski). Initially, bakers designated by the Guild prepared Obwarzanek Krakowski only during Lent.

Baked from wheat, rye, or other grains and often topped with different seasonings, the bagel became popular as a year-round street food in 16th and 17th century Poland.

Similar breads, popular in Poland--- bialys and pletzels--- also arrived in the United States with Jewish immigrants. Bialys are flat with depressed centers seasoned with onions and poppy seeds, like "flatbreads" or "onion breads." They originated in the town of Bialystok. Pletzels, similar to pretzels, may have evolved from the soft pretzels made in German monasteries.

The Lender family arrived from Lublin, Poland in 1927 and 1929 and started a small bagel business in New Haven, Connecticut, which they expanded in 1960, selling frozen bagels to retail outlets. Lender Bagels is currently owned by Bimbo Bakeries USA, which owns other familiar brands, such as Arnold's, Thomas, Entenmann, Sara Lee and Levy's Jewish Rye.

A long time ago, in certain Brooklyn neighborhoods, on a Saturday night, people could walk to places baking bagels for traditional Sunday breakfasts with cream cheese and lox. Sometimes these places were in cellar basements, reachable from the street. The bagels were fresh from the oven, hot

and delicious. Sold by the bag for a quarter or so, people often would devour them on the way home without cream cheese and lox.

Those were the best bagels.



THE JRLW BRUNCH IS BACK!

On Sunday, October 15, we will have our first buffet brunch of the season! The entertainment will be the Night and Day Band featuring the music of Rogers and Hart.

Get your tickets by October 11, at Clubhouse I Lifestyle office. The price for JRLW members is \$21.00 per person. Payment by check only.

Come and bring your friends. You will enjoy the music and the good food.

Hopefully, this will not be our last brunch. However, if we do not get a volunteer to be the lunch coordinator, our brunches will stop after our October brunch.



SPECIAL MESSAGE FROM THE JRLW PRESIDENT: OCTOBER MAY BE OUR LAST BRUNCH!

Brunches will be canceled as of November 1st if we do not have a new volunteer Coordinator!

Our current Coordinator, after many years of service, is stepping down after October's brunch. We have several volunteers who are willing to assist, and we need a coordinator who will orchestrate the volunteers. Please see the "Needs Ad" for details of the position and a Point of Contact.

CANTOR'S CORNER 100

Michel Kravitz



This is my hundredth column for the JRLW newsletter/MEGILLAH. It is hard to believe.

You probably received this MEGILLAH at the end of September.

It is a busy time on the Jewish calendar. With Yom Kippur on September 25 this year and Erev Sukkot on September 29, we go from somber to joyful in a very short period of time. With Shemini Atzeret falling on Saturday, October 7, (and we will have JRLW services that will include Yizkor) and Erev Simchat Torah falling that night, there is a lot of Jewish observance and celebration in the early days of October.

I love Simchat Torah because of the singing and dancing. I have known many of the songs of Simchat Torah since I was very young and have continued to learn new ones as I've gotten older. One of the songs I learned early on was DOVID, MELECH YISRAEL and it has very simple lyrics—"Dovid, Melech Yisrael, Chai Chai V'Kayam (David, the King of Israel, lives and endures)." It's a song that virtually all of you know, and it's fair to say that it will be sung in every synagogue during Simchat Torah. But this song comes with a "rest of the story." Paul Harvey made a career out of sharing stories like this one, and I'm sure he'd appreciate the story I'm about to tell.

In the second century C.E. (Common Era), the Romans occupied Judea. They had destroyed the Temple in the year 70 and crushed the revolt of Bar Kochba in the year 135. The Romans did whatever they could to punish those who defied Roman rule, and this included the Jews. During that time and for centuries afterwards, the start of the new month (Rosh Chodesh) was considered to be a minor holiday and had celebrations associated with it. The Romans forbade the celebration of Rosh Chodesh. What were the Jews to do?

At that time, there lived a man known as Judah HaNasi (Judah the Prince). General consensus is that he lived from 135 to either 217 or 219 C.E. He was a much-revered rabbi whose major contribution was serving as the editor of the Mishnah, writing down opinions that constituted Oral Law. One of his students had been Rabbi

Hiyya the Great. According to Rosh Hashanah tractate 25a of the Talmud, Rabbi Judah HaNasi said to Rabbi Hiyya, "Go to a place called Ein Tav and sanctify the New Moon there. Send me a sign that you have sanctified it, and the sign is, 'Dovid, Melech Yisrael, Chai v'Kayam.'" Thus, the people knew when to observe Rosh Chodesh even though its observance was forbidden, and the signal was the words to DOVID MELECH YISRAEL.

Today, on the Shabbat before Rosh Chodesh, we offer a prayer for the new month. This prayer's final verse says, "May the Holy One bless this month for us and for all His people, the House of Israel, with life and peace, joy and gladness, deliverance and consolation. And let us all say Amen."

Please remember this when you sing DOVID MELECH YISRAEL on Simchat Torah.

Be well and stay safe.

GOOD AND WELFARE

Mazel Tov to Herb and Rena Morris on the engagement and pending marriage of their granddaughter, Jenna Ehrich to Cory White.

Mazel Tov to Janet and Sidney Lazar on their 60th Anniversary!

Mazel Tov to Marcia and Bert Crystal and to Rhoda Krens on the birth of great-granddaughter Oakley Marie Krens!

Have you seen the lovely Shabbat greetings on our Facebook page? Thanks go to Carol Wendkos who designs these greetings.

We send prayers of healing to Judy Frumkin. Judy fell and suffered a fracture of her femur.

Our wishes for a speedy return to good health go to Anita Sperling.

A very happy 102nd birthday to Maxine Rosthal!



WE REMEMBER

Shirley Rosenhaft.

Mark Levine.

May Their Memory Be As A Blessing.

BRINGING THE JOY OF PRAYER THROUGH PSALMS!



Cantor Wendy Gonzales
cantorwendyg@gmail.com

How powerful and beautiful is the Book of Psalms! Psalms are integrated into every aspect of our lifecycle and prayer during services. They are songs of praise for G-d's work in our creation and history.

Psalm 133: Hine Ma Tov – Behold how good it is for all of us (as brothers and sisters) to be together in unity!

From the beginning of our daily services incorporating the P'sukei D'Zimrah – Psalms 30, 100 and 145 – 150 are dominating our services. Many are familiar with Psalm 145 (Ashrei) and actively chant this during our morning services. Our Psalms are read and chanted traditionally as an opportunity for asking G-d's favor and are recited often in times of personal challenge when we are dealing with illness and physical danger. The 23rd Psalm has traditionally been recited during the bereavement process.

We, also, in addition to Psalm 133, chant Psalms of joy. For instance, Psalm 150, Kol Hanshema, is a joyous and celebratory acknowledgment of incorporating musical instruments in our ancient ritual celebrations; the harp, cymbals, shofar, etc. What are we celebrating and acknowledging? We are praising G-d and ensuring that we celebrate in G-d's holy place and in the highest heavens. We are not just celebrating these tangential aspects, but also "neshamah" – the soul and literally translated in biblical Hebrew as "breath," referring to the "breath of life." How powerful these psalms are and should be appreciated for the feelings that these powerful words convey!

Many years ago, when I was spending a week with my colleagues at Olin Sang Ruby Institute in Oconomowoc, Wisconsin, I had the pleasure of being a part of the original group of cantors and Jewish music professionals to learn Julie Silver's Shir Chadash, based on Psalm 96. Her brilliant musical composition brought new joy to this wonderful Psalm and had a powerful effect on me and to the many congregants I taught it to over the years:

Sing unto G-d all the earth a new song,

I will sing unto G-d a new song.

Sing unto G-d and we'll all sing along,

All the earth a new song unto G-d!

I invite you to celebrate the power of this beautiful musical version of Psalm 96 by listening to Julie Silver, the composer, singing this on YouTube: <https://www.youtube.com/watch?v=6y75apCU3hs>. OR, you can have the chance to hear Shir Delight, our incredibly talented JRLW choir, sing it at an Erev Shabbat service! OR please consider joining our choir. We meet on Tuesday evenings in the Edmonson Room in Clubhouse II at 7:30 pm. Feel free to contact me at cantorwendyg@gmail.com if you have any questions.

The beauty of Psalms is Psalmthing you should consider! :)

KRISTALLNACHT PROGRAM

Jacob Tenebaun

On November 9, 2023, the JRLW will present a program in the Crystal Ballroom of Clubhouse I, at 2:00 pm, commemorating Kristallnacht, or The Night of Broken Glass, which took place on the night of November 9, 1938. It was a program (an anti-Jewish riot) of destruction, beatings, killings and mass arrests carried out at the direction and participation of the Nazi government. What makes this event important is that it began the violent attempted destruction of the Jews of Europe.

What makes it relevant today is that Kristallnacht serves as a model of what prejudice, racism and hate can become. This is not merely a Jewish problem, but a human rights problem for every minority population. With so many internet sites spewing hatred of Jews, Blacks, Asians, Latinos, Arabs and LGBT+ and every other minority, the lessons of hatred and what it can and did become, are more relevant today than ever before.

Our guest speaker will be Shelby Gadol, the Assistant Director of ADL's D.C. region. Among other duties, she manages incident response. She will speak about hate crimes and their rise in the U.S., and what is being done about them.

The program is free, registration is not required.

PROGRAM AND EDUCATION

Becky Siman

A special thank you goes to those who helped to distribute the bakery items from Sunflower Bakery – Shari Goldstein, Tova Kaplan and Leah Weisman.

Tuesday, September 12, Wise Aging Pilot Program, 1 pm to 3 pm. Clubhouse I Maryland Room was SOLD OUT!

Thank you to Judi Broida for championing the program and to everyone who signed up for the pilot program. We are considering a follow up program to this successful pilot. If you want more information contact Judi Broida at jbroida@comast.net.

Wednesday, October 18, Inaugural JRLW Golf Outing. 9:15 am Leisure World Golf Course. Join other JRLW men and women golfers for a Scramble game of golf starting with some bagels and coffee at 9:15 am. There will be prizes. Standard Leisure World Golf fees apply: LW golf member pay a \$12 cart fee, LW Resident pay a green fee and cart fee of \$28. Nonresidents pay a green fee and cart fee of \$32. Mail your Scramble Registration \$10 fee to Alan Nelson by October 13. See the flyer for more details. Contact Alan Nelson on apnelson8@yahoo.com or 301 922-0410.

Sunday, October 22 – Israeli Dance Program, 2 pm. Clubhouse II Auditorium

Rikudei Yachad, a young adult Israeli Dance Group from Montgomery County, will entertain JRLW members as well as teach a dance. Admission is free. This is the last of the Israel 75 Celebration events. There is no charge, but you will need to register at Clubhouse II Lifestyle office starting September 19. Bring your Leisure World ID. See the flyer. Rikudei Yachad is the DMV's newest young adult Israeli dance performance troupe. Founded in 2021, they rehearse monthly in Montgomery County and are composed of college students and young professionals with diverse dance backgrounds. Hannah Weisman, a lifelong dancer in the DC Israeli dance community and the granddaughter of JRLW member Leah Weisman, directs the troupe. See the flyer in this issue.

Wednesday, October 30, JRLW/JCC Movie Exodus 91 Clubhouse II Auditorium, 1:30 pm.

This extraordinary film follows Israeli diplomat, Asher Naim, on a seemingly insurmountable mission to bring 15,000 Ethiopian Jews to Israel. As he learns more about these African Jews, he finds himself between worlds and faces a crisis of faith in himself and his country. Set in 1991 amidst the international politics behind Operation Solomon, Asher Naim learns he is being sent to Ethiopia to negotiate the release of thousands of Ethiopian Jews from a country collapsing under famine and civil war. Working with his Ethiopian-Israeli colleagues who themselves immigrated to Israel only a decade earlier, Asher's faith in his mission is tested as he navigates the treacherous world of bureaucracy and politics. Made in 2022, 90 minutes, in English, \$10 in advance, \$12 at the door by check only made out to JRLW. Tickets available September 19 – October 29, at Clubhouse II Lifestyle Office. See the flyer.

Hold the dates

Thursday, November 9 – JRLW Kristallnacht Program with speaker from the ADL

Monday, November 13 – Book Club

Thursday, November 16 – JCC Movie

Sunday, November 19 – Brunch with Evan Glass, President of the Montgomery County Council.

Bender JCC Coming of Age Events

Theater trips with Leisure World Pick Up Sunday, November 5, to see Ragtime and Sunday, December 17, to See Pretty Woman.

The JCC and Coming of Age has many programs of interest at their building in Rockville including a Health and Harvest Fair on Sunday, September 28, from 10 am to 2 pm. Check out their website <https://www.benderjccgw.org/adults2/coming-of-age-in-maryland/> or just type in Bender JCC Coming of Age into your search engine.

Contact Frieda Enoch for more information on 301 343-3832 or fenoeh@benderjccgw.org.

HADASSAH NEWS

Barbara Eisen

Sarah Leavitt will speak on "Introducing the Capital Avrum Ashery will present a lecture on Wednesday, October 18 at 2 p.m. in Clubhouse I entitled, "Advocating for Israel with Creative Impact in the Media to the American Public.....Where has it been?" He has been presenting the lecture to all parts of the American Jewish community. His lectures and workshops are used for adult education lectures, workshops for families, teens/youth groups, Jewish community leadership and religious school students. Although the main positions in his life have been in the art world, his hobby for the last 46 years has been Jewish studies.

There is a \$5 entrance fee payable at the door by cash or a check payable to Hadassah. For questions, call Sandy Stein at (301-384-8739). Refreshments will be served.

The Hadassah Judaic Studies Group will meet on Monday, Oct. 16 at 1:30 pm via Zoom. Hadassah members will receive an emailed notice with a link to access the program. Others may send an email to Marylin Jordan at mjordan2262@comcast.net to request the link. At a time in history when medical advances surround us, the discussion will focus on Jews who were honored with the Nobel Prize in Medicine or Physiology. Who were they? What did they discover? How did these discoveries affect our lives today? Participants are encouraged to share their knowledge of Jewish individuals who made breakthroughs in medicine. The moderator will be Shari Goldstein. All are welcome to attend.

Elaine Schenberg and Jan Bloom sell Hadassah greeting cards. The price of cards is \$3 each for one to three cards and \$2.50 each for four or more cards. Call Elaine at 301-598-0079 or Jan at 301-593-7720 to buy cards. They will even send them for you, if you add postage costs to the regular fees.

Beverly Weinstein is chair of Hadassah's Youth Aliyah/Children at Risk project, which is currently accepting Ukrainian children into their youth villages in Israel. Consider a donation to this worthwhile project. Those who would like to contribute can send a check, payable to Hadassah, to Beverly

Weinstein at 12524 Eastbourne Drive, Silver Spring, MD 20904. For questions, call her at 301-622-1613.

Hadassah encourages women of any faith to join as an annual or life member. Special associate memberships are available to men. If interested in knowing more about Hadassah, contact Linda Epstein at 301-847-9650.

MEMBERSHIP COMMITTEE

Suzy Klein

We hope you had a good beginning to the fall season. We are thankful that JRLW was able to provide Reform and Conservative High Holidays and Shabbat Services for our members and their guests during September and will continue to do so throughout the High Holiday season.

What an exciting time to be a member of JRLW! After having rousing success at our Meet and Great in August, we hope you have been able to connect with other JRLW members, in addition to meeting new ones. We hope that you will agree that our vibrant, caring JRLW is a Leisure World organization that truly has activities to meet the needs and interests of our Jewish member community. As you see throughout the columns and pages of the Megillah, JRLW welcomes and encourages suggestions on new ones. Examples of that would include our new Social Activities Committee, as well as our Theater Trips that will continue throughout the fall season.

All of our countless activities will be published in the Megillah, on our JRLW website, www.jrlwmd.org and our closed JRLW Facebook page. Please remember to introduce yourself to those whom you do not know when you are attending our services and other events. Also, please encourage those who are not members to join our organization. Have a wonderful October and thank you for being a member of the Jewish Residents of Leisure World. L'Shanah Tovah!

Suzy Klein - smklein.advocate@gmail.com
301-346-7997

Linda Nelson - lpnelson3@comcast.net
301-922-1793

TORAH and PRAYER BOOK FUNDS

Individuals can be honored and loved ones memorialized with a contribution to the JRLW Torah or Prayer Book Fund for a minimum donation of \$25.00.

PRAYER BOOK FUND

If you would like to make a donation in honor of or in memory of someone in a Reform prayer book, Conservative Prayer book or a Chumash (Bible), please stipulate which one in your request. Please send your requests to donate prayer books to Florence Kasden, 3100 Leisure World Boulevard, #610, Silver Spring MD 20906. Her phone number is 410-251-9382.

Barbara Rothenberg donated a Reform Prayer Book in memory of June Kessler.

Esther Goldstein donated a Conservative Prayer Book in memory of June Kessler.

Linda and Ron Schoolnick donated a Reform Prayer Book in memory of June Kessler.



TORAH FUND

For contributions to the Torah Maintenance Fund, send your check, made out to JRLW, to Carol Wendkos, 14805 Pennfield Circle, #212, Silver Spring, MD 20906.



TZEDAKAH, KIDDUSH AND ONEG DONATIONS

For information about Tzedakah, Oneg or Kiddush donations, please call Susan Weiss at 301-460-6030. Checks should be made out to JRLW and mailed to Susan Weiss, 3739 Glen Eagles Drive, Silver Spring MD 20906.

TZEDAKAH DONATIONS

Charlotte Shapiro in gratitude to Jewish Residents of Leisure World.

Henny and Harold Steinman in honor of Jerry Lake's 91st birthday.

Richard Rothstein in memory of June Kessler.

Norma Kirschner in memory of June Kessler.

Lois and Richard Falck in memory of Richard's sister, Susie D. Weintraub.

Lois and Richard Falck to Michele Kreiss in memory of her husband, Marty Kreiss.

Carole and Bob Mund in memory of June Kessler.

Harriet Chaiken in memory of her friend, June Kessler.

Dinah Little and John Downey to Claude Levine in memory of her husband, Mark Levine.

Herb and Rena Morris to Jerry Feldman in honor of his 100th birthday.

Herb and Rena Morris announce the engagement and pending marriage of their granddaughter, Jenna Ehrich to Cory White. They met as students at the University of Delaware.

Shirley Light in memory of Shirley Rosenhaft.

Susan and Jonas Weiss in memory of Shirley Rosenhaft.

Norman Salenger in memory of Shirley Rosenhaft.

The Rosenthal - Mauzy families in memory of their Mother, Rosalind Rosenthal.

Roberta Gordon made a donation in gratitude to Jewish Residents of Leisure World.

KIDDUSH DONATIONS

Oneg and Kiddush donation by Norman Salenger in memory of his neighbors, June and Robert Kessler.

Kiddish donation by Janet and Sydney Lazar in honor of their 60th Wedding Anniversary.

WE WELCOME NEW MEMBERS

Elizabeth Shuler
15101 Interlachen Drive, Apt. #125
Silver Spring MD 20906

Paula Silver
14809 Pennfield Circle Apt. #406
Silver Spring MD 20906

Richard and Rho Silbergliitt
3815 Glen Eagles Drive
Silver Spring MD 20906

David & Irene Feldman
2901 S. Leisure World Blvd. Apt. #516
Silver Spring MD 20906

Robin and Howard Tash
3310 N. Leisure World Blvd., #114
Silver Spring MD 20906

Madeleine Kleinman
3330 N. Leisure World Blvd., #723
Silver Spring MD 20906

Samuel Friedman
3100 N. Leisure World Blvd.
Silver Spring MD 20906

Robert & Barbara Leventhal
15101 Interlachen Drive, # 317
Silver Spring MD 20906

Sandra Levinson
2901 S. Leisure World Blvd., #328
Silver Spring MD 20906

Steve & Sue Schaffer
15000 Pennfield Circle, #303
Silver Spring MD 20906

Cheryl Fahy
3559 S. Leisure World Blvd., #1C
Silver Spring MD 20906

Madeleine Kleinman
3330 N. Leisure World Blvd., #723
Silver Spring MD 20906

NEW LIFE MEMBERS

Janet Lazar
15311 Beaverbrook Court, #1B
Silver Spring MD 20906

Judy Peritt
15101 Interlachen Drive, Apt. 1017
Silver Spring, MD 20906

Judith Kirsch
3200 N. Leisure World Blvd., Apt. 806
Silver Spring MD 20906

Myra Baum
3641 S. Leisure World Blvd., #2C
Silver Spring MD 20906

Diane Blacker
15316 Pine Orchard Drive, # 2C
Silver Spring MD 20906

Judy Peritt
15101 Interlachen Drive, Apt. 1017
Silver Spring, MD 20906

Gilda Dubroof
May thru Nov: 3210 N. Leisure World Blvd., #418,
Silver Spring MD 20906
Dec - April: 1120 Boxwood Drive, #103, Delray
Beach FL 33445

Welcome

ATTENTION

SNOWBIRDS

Please notify Marsha Bernstein if you will be away for a few months and still want to receive your Megillah.

Remember, when you return, you have to notify Marsha to change the address back to Leisure WORLD.

MARSHABERNSTEIN4@GMAIL.COM

RITUAL COMMITTEE

Ellyn Kaufman

Shalom dear friends,

What a terrific beginning to the year 5784 we had at JRLW! There are so many, many people to thank for making the welcoming of this Rosh Hashana a success. Thanks to our devoted clergy: Rabbi Gary Fink, Cantor Wendy Gonzales and Cantor Michael Kravitz for outstanding services. Thank you to the many volunteers, too many to list here, for your help and support. I will only mention our lay leaders who gave of themselves to enhance our Conservative services - Harold Geetter and Sid Sussan. When called upon, about 50 of you were willing to take parts and honors in the services. That also enriched the services. Yashir Koach to all of you!

In October we have the holiday of Sukkot. Thanks to Bob Fenichel and his committee for erecting the sukkah towards the back of the Interfaith Chapel parking lot. A huge thank you to Naomi and Steve Kline for sponsoring the refreshments and the lulav and etrog for the holiday.

As you no doubt know, the pilgrimage festival of Sukkot gets its name from the outdoor booth, or hut, known as a sukkah. This is how the Israelites sheltered themselves as they fled from slavery in Egypt.

Another important custom associated with the holiday of Sukkot are the 4 species. These are the etrog (citrus which smells and appears like a lemon), the myrtle, palm and willow which woven together make up the lulav. The lulav is said to represent the spine of a human, the etrog represents the heart of a person, while the *hadas*, myrtle, represents the eyes of a person and the *aravah*, willow, represents the lips of a person. These remind us we must have backbone, be careful of our speech, watch and be aware of our circumstances and use our heart with our neighbors.

As you know, we started back with monthly onegs/kiddishes after Shabbat services. Anita Sperling, our coordinator, is having difficulty putting these together for our second Saturday of the month Shabbatot. We must have someone to step forward to help coordinate these in order for them to continue. Please contact me, Ellyn Kaufman, if you are able to help regularly to set up and clean up the Saturday morning Kiddishes.

Thank you for your support of JRLW and our ritual and religious activities!

Kol tuv,

Ellyn Becker Kaufman

Ritual Chair

“NEED ADS”

Shiva Leaders: We're looking for 3-5 people who can lead a Shiva service. Jonas Weiss (weissjs2@gmail.com) is our Shiva Coordinator. Typically, he gets a few calls a year asking for JRLW to provide a leader for a Shiva service. If you can lead a Shiva service and can spare a very few hours a year, please let Jonas know that you are available. By having 3-5 people, if someone is busy, Jonas can ask the next person on the list.

Brunch Coordinator: We have several people who have volunteered to support a Brunch Coordinator. However, we still need a coordinator. Please contact Lyle at lwolinsky@ymail.com if you have any questions.

The process is:

Coordinator function: Tell Toby how many tables to set in the room plus any audio visual and extra tables needed. Tell Julia how many for food preparation the Tuesday before the event. The rest of the Brunch is handled as follows, FYI:

1. Joni and Karen contact and select the speaker for the dates.
2. Reserve the third Sunday of the month with Toby in Clubhouse I for the entire year except June, July and August.
3. Then create the flyer or story for the newsletter, email to Bernice, Becky, Steve, Jonas, Marsha, Alan, Paul, Laura, Ray, Toby and Yovanka.
4. Yovanka creates the tickets.
5. Toby sells the tickets up to 200. She sends an excel file to Coordinator and Steve Cohen.
6. Steve Cohen assigns seats.
7. Laura and helper give people seat assignments at the event.

Contact

JRLW BOOK CLUB

Steven Cohen

LAST KINGS OF SHANGHAI

Monday, November 13, 10 am – 12 noon.
Clubhouse I Potomac Room
Moderator: Florence Kasden

The Last Kings of Shanghai is a history of the Sassoons and Kadoories, two powerful Jewish families who helped shape China.



OFF TO JOIN THE CIRCUS

Monday, January 8, 2024, 1:30-3:30 pm
Clubhouse II Auditorium
Moderator: Deborah Kalb

Deborah Kalb (Marvin's daughter) to speak about her new book, *Off to Join the Circus* -- her first adult fiction about a Jewish family. She is a very sweet person. For the record she is appearing at Politics and Prose this weekend to speak about her book.

**FOR FURTHER INFORMATION CONTACT
STEVE COHEN AT 301 667 3099 OR
STEVECOHENJD@GMAIL.COM.**

We are still looking for moderators.



SOCIAL ACTIVITIES COMMITTEE

Fred Springer

Light the first Hanukkah Candle and join us on December 7, 2023, for Latkes and Jelly Donuts with a splash of Vodka in celebration of the upcoming holiday of Hanukkah. Details to follow. This will be a limited number of attendees event, so reserve your space early.

If you have a social activity to propose and will lead a group of our committee members to bring it to life, join us by contacting Fred Springer by text to 301-213-5482.



HELP NEEDED!!

NEEDED: Volunteers to help set up and take down the JRLW sukkah.

Bob Fenichel has volunteered to set up and take down our sukkah. He needs a few volunteers to help him. He would like people to just give him their name and e-mail address. No obligation, no need to say you will show up.

He will send out an e-mail to that list about a month in advance.

Set up will be on Wednesday, September 27, at 10:00 am, with Thursday, September 28, being the rain day.

Take-down will be on Monday, October 9, at 10:30 am with Tuesday October 10, as the rain day.

Please send your name and email address to Bob2200@aol.com if you can spare a little time to help JRLW.



ON THE LIGHTER SIDE 😊

A rabbi was walking home from the Temple and saw one of his good friends, a pious and learned man who could usually beat the rabbi in an argument. The rabbi started walking faster so that he could catch up to his friend, when he was horrified to see his friend go into a Chinese restaurant (not a kosher one). Standing at the door, he observed his friend talking to a waiter and gesturing at a menu. A short time later, the waiter reappeared carrying a platter full of spare ribs, shrimp in lobster sauce, crab rangoon, and other treif (non-kosher food) that the rabbi could not bear to think about. As his friend picked up the chopsticks and began to eat this food, the rabbi burst into the restaurant and reproached his friend, for he could take it no longer." Morris, what is this you are doing? I saw you come into this restaurant, order this filth and now you are eating it in violation of everything we are taught about the dietary laws, and with an apparent enjoyment that does not befit your pious reputation!" Morris replied, "Rabbi, did you see me enter this restaurant?" The rabbi nods yes. "Did you see me order this meal?" Again, he nods yes. "Did you see the waiter bring me this food?" Again, he nods yes. "And did you see me eat it?" Nods yes. "Then, rabbi, I don't see the problem here. The entire thing was done under strict rabbinical supervision!"

PINK MEGA CHALLAH BAKE

The Jewish Women's Circle of the Olney Chabad, 17320 Georgia Avenue, Olney, is having a Challah Bake on Thursday, October 19, at 7:00 pm.

This will be a relaxing evening celebrating the Jewish Woman in honor of Breast Cancer Awareness in March.

This event is open to women and girls 10+. Program will include baking challah from scratch, delicious refreshments and an inspiring talk from a local breast cancer 'thriver.' A portion of the proceeds will benefit Sharsheret, an organization that supports and guides women and families through the challenges of breast cancer.

To attend, please RSVP Devorah Stolik at devorah@jewisholney.com.

RECIPE CORNER

CHUNKY APPLE AND PEAR SAUCE



Marcia Crystal

2 large apples
 2 pears
 2 tbsp sugar (or more to taste)
 2 tbsp lemon juice
 ¼ tsp cinnamon
 ¼ tsp ginger

Peel and dice apples and pears. Place in medium-sized saucepan. Add sugar, lemon juice, cinnamon and ginger. Mix well. Cover and cook over low heat 20 minutes, stirring often, until tender. Mash with potato masher. Serve warm or chilled.

JRLW Sunday Brunch

October 15

The Night and Day Band

with the music of Rogers and Hart

Crystal Ballroom, Clubhouse 1

Includes full Sunday food buffet:

Member's price is \$21.00 per person.

✓ **Make checks payable to JRLW.**

Pay by check only at E&R Lifestyle office:

Tickets are available for purchase.

Sept. 11– October 11 at Club House I.

We will place you at a reserved seat. If there are members with whom you would like to sit (tables of ten), please list them. All seats must be paid at the time of purchase to reserve a seat, table, or partial table.

Only checks accepted for payment. No refunds on tickets.

My name is:

My phone number is:

Email address:

✓ **Remember to have each person bring a mask.**

Seat assignments given at the reception table at the event 10:00am.

✓ **Bring this form with you to purchase your tickets.**



Wednesday, October 18, 2023 - 9:15 a.m.

**Jewish Residents of Leisure World
Inaugural Golf Outing**

**Leisure World Golf Course
Men and Women**



9 Hole Scramble with Prizes

**Bagels at 9:15 a.m.
First Tee Time 10:08 a.m.**

**To Register Send \$10 Check Made Out to JRLW
To Alan Nelson - 3210 N Leisure World Blvd #703
Silver Spring, MD 20906 by **October 3.**
apnelson8@yahoo.com**

301 922-0410

**Pay Golf Fees in Golf Shop
LW Golf Member - Cart \$12
LW Resident-Green Fee and Cart \$28
Nonresident = Greens Fee and Cart \$32**

**Sunday, October 22, 2023 2:00 p.m.
Clubhouse II Activities Room**

Israeli Dancing

Rikudei Yachad Performance

A DMV Young Adult Dance Troupe

Watch them dance then learn a dance following the performance.



This is the third event of the JRLW Israel 75 Events

Tickets available at Clubhouse II LifeStyle office September 19

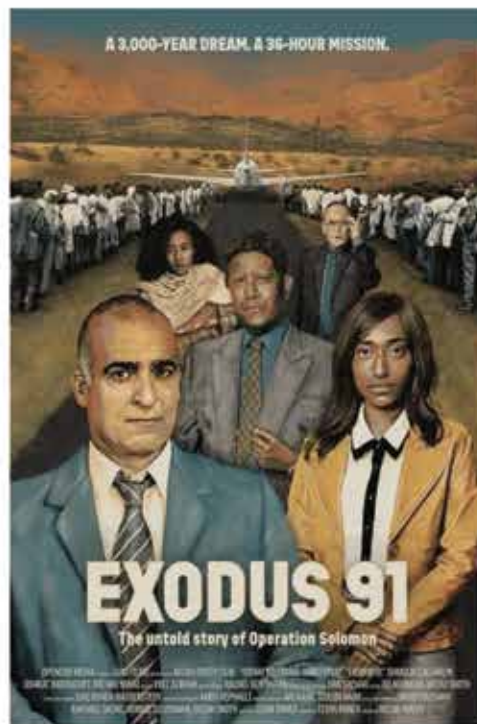
**The event is free, but you must register.
Remember to bring your Leisure World ID**

**Monday, October 30, 2023 1:30 p.m.
Clubhouse II Auditorium**

JRLW and Bender JCC Coming of Age Present

Exodus 91

A hybrid documentary/drama this historical drama recounts the politically complex May 1991 event known as Operation Solomon



Tickets on Sale at Clubhouse II LifeStyle office September 19 to October 30. \$10 in Advance, \$12 at the door with a check made out to JRLW.

**The film is in English, is 90 minutes, and was made in 2022.
This film is being shown at many Film Festivals.**

JRLW MEMBERSHIP

It's time to join OR renew your membership for **Fiscal Year May 1, 2023 – April 30, 2024**. Please fill out the form below so we can make sure your information is correct. Make your check payable to JRLW and mail it to:

MARSHA BERNSTEIN - JRLW
3210 N. Leisure World Blvd, # 921
Silver Spring, MD 20906-7605

_____ Individual (\$25) _____ Couples (\$45) _____ Life* _____ New Member

Name: _____

If all the information below is the same as last year, just put SAME

Address: _____

Phone Number: _____

Email Address: _____

We ask for your email address so we can send you important and time-sensitive messages

If you have any questions or suggestions, or *if you would like to volunteer to help JRLW*, please contact Marsha Bernstein at 301-288-4678.

*LIFE MEMBER

You may also want to consider becoming a Life Member. Life Membership is a way of showing support and commitment to JRLW. It also means you do not have to pay your annual dues in the future. The chart below, based on age, shows the cost of Life Membership, **per person**.

<u>AGE</u>	<u>COST (per person)</u>
64 and under.....	\$375
65-69	\$300
70-74	\$285
75-79	\$225
80-84	\$175
85+	\$100

ONE CAMPUS. COUNTLESS EXPERIENCES.

For ever-curious older adults, Charles E. Smith Life Communities hosts events that ***interest, entertain*** and ***educate***.

Join us for a Smart Moves Seminar to discover how you can make a fresh start with a move to carefree retirement living.



Charles E. Smith
LIFE COMMUNITIES



Be our guest.

Point your phone at the QR code to view our Calendar of Events and RSVP to the event(s) of your choice.





WHERE YOU LIVE.

Exceptional possibilities start with a month of free rent.

At Ring House, comfort, security, and attentive service come together to create an award-winning lifestyle.

And now, you can love it for less. There's no buy-in fee, just an affordable, all-inclusive monthly rental payment.

Receive one month free when you take possession of any apartment home style by June 30.



Charles E. Smith
LIFE COMMUNITIES

CALL 301-476-4390

to learn more about our limited-time savings
and schedule a personal visit.

Let Your Bright Life SHINE



At Brightview Senior Living, we do it right. Activities and entertainment are available all day, every day. Great dining in a variety of venues is within reach – so no driving (or cooking) is required. Friends and neighbors are always nearby, so isolation is never an issue. A dedicated staff provides support, if it's needed, and takes care of all those pesky chores.

We invite you to explore our gorgeous community, where happy, longtime associates, a vibrant lifestyle, and personalized support empower area seniors to *live brightly*.

Independent Living | Assisted Living | Dementia Care | Enhanced Care
Schedule Your Visit Today.

BRIGHTVIEW
 SENIOR LIVING

www.BrightviewSeniorLiving.com

**Exceptional Living.
 We're in the Neighborhood.**



BETHESDA

Brightview Grosvenor | 301.615.0119
 Brightview Woodmont | 866.838.2380

ROCKVILLE

Brightview Falls Grove | 855.716.3836
 Brightview West End | 855.431.3475



*Let Your
Bright Life*
SHINE



Brightview's award-winning communities make life extra bright for area seniors and their families.

We invite you to explore our gorgeous communities, get to know our teams, and discover how Brightview's personalized services, support, and enriching lifestyle can make life brighter for you, too.

Independent Living | Assisted Living | Dementia Care | Enhanced Care
Schedule Your Visit Today.

BRIGHTVIEW
SENIOR LIVING

www.BrightviewSeniorLiving.com

**Exceptional Living.
We're in the Neighborhood.**



BETHESDA

Brightview Grosvenor | 301.615.0119
Brightview Woodmont | 866.838.2380

ROCKVILLE

Brightview Falls Grove | 855.716.3836
Brightview West End | 855.431.3475



Leisure World trusts **Family & Nursing Care**



As a premier resource for in-home care services, Family & Nursing Care helps families rest easy, knowing their loved ones are well supported. From that first cup of coffee in the morning to a sacred bedtime ritual to an unexpected need in the middle of the night, **we are here for you.**

To learn more, come meet **Kelly** and **Jeff** in our office in the Leisure World Medical Center.



3305 N. Leisure World Blvd. familynursingcare.com (301) 588-8200

REHABILITATION

RETURN TO THE
LIFE YOU LOVE

Brooke Grove Rehabilitation and Nursing Center's innovative place to heal and revitalize is simply different from any other option in the region.

A STATE-OF-THE-ART REHAB CENTER

Fully dedicated to short-term rehab • Two-story physical therapy gym bathed in sunlight • Leading-edge therapies for faster healing • Expansive guest rooms with luxury bathrooms • Restaurant-style dining with sunset views • Fireside gathering places • Covered porches, courtyard garden and walking trails • Salon • Spa with massage room and soaking tub

SIMPLY DIFFERENT ...
BECAUSE WHAT SURROUNDS YOU **REALLY MATTERS.**



BROOKE GROVE
RETIREMENT VILLAGE

18100 Slade School Road
Sandy Spring, MD 20860

301-637-8928

www.bgf.org



INDEPENDENT LIVING ASSISTED LIVING REHABILITATION
LONG-TERM CARE MEMORY SUPPORT

HOSPICE



ESCORTED
TRANSPORTATION



IN-HOME
SUPPORT



CARE
COORDINATION



MENTAL
HEALTH



jssa

Medicare and Most Major
Insurance Accepted.

JSSA.org

JSSA is the trusted health and social wellness agency that helps neighbors and their families through their most vulnerable moments with warmth and acceptance.

Everyone needs support at some point. Our goal is to make essential care and quality of life accessible to everyone.



Partner Agency of
The Jewish Federation
OF GREATER WASHINGTON



Call us at 240-800-JSSA to find
out how we can help.



 **THE DENTAL OFFICE AT LEISURE WORLD**
301-598-1015

CARMEN LANIO DEVRIES, DDS



**OPEN FOR
ROUTINE CARE**

Conveniently located in the
Leisure World Medical Center



**ACCEPTING NEW
PATIENTS**



Enhanced Safety Protocols

- ✓ Dedicated entrance for dental patients
- ✓ Temperature checks
- ✓ Masks required for entry
- ✓ HEPA air purifiers
- ✓ Augmented PPE for staff

3305 N. LEISURE WORLD BLVD
SILVER SPRING, MD 20906

ABOUT US

As a part of the Leisure World community for over 40 years, our conservative practice philosophy focuses on prevention and maintaining health and function. We cater exclusively to older adults.

Call and Visit Us at Nu Images Salon in
Leisure World Plaza for the summertime!



20% OFF

for new customers!

Call Us ASAP to get your discount!

Starting July 5, 2023, all color treatments will be an additional 10% off for all new customers thru August 5th, 2023 - **ONE MONTH ONLY!**



Scan for
Google Page

-  **301-598-3000**
-  **Leisure World Plaza**
3810 International Dr
Silver Spring, MD 20906
-  **NulmagesSalon.com**





Seniors Helping Seniors®

PROVIDING COMPANIONSHIP & IN-HOME CARE

We're Excited To Meet You!

Our unique program matches mature adults who want to help with seniors who are in need of help. We're proud to serve Bethesda, Rockville, Silver Spring, & the surrounding areas!

Let's chat!

🌐 shsbethesda.com

☎ 301-895-0205



Our Care Services At A Glimpse

- Companionship & Socialization
- Light Housekeeping
- Shopping and Errands
- Doctors Appointments
- Medication Reminders
- Meal Preparation
- Transportation
- Handywork
- Pet Care & More!



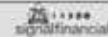
GITO (JOSE JORGE)
240-475-7015

Silver Spring, MD
jorgesperanca@gmail.com

GET IN TOUCH NOW!

SERVICES

- ASSEMBLE FURNITURE
- BUILD SHELVES
- DECLUTTER AND ORGANIZE
- CLEAN CARS
- RUN ERRANDS



Diamond Anniversary Share Certificate

10 Months
Minimum to open: \$500



Signal Financial is celebrating 75 years of serving the community with a special Diamond Anniversary Share Certificate.

Contact the Leisure World branch at
301-933-9100 ext. 422 for more info!



Hard Hitting. Community Oriented. Substantive. Cultured.

Washington Jewish Week

An essential part of Jewish Life in the Greater Washington area

washingtonjewishweek.com 301.230.2222

Love and Remembrance Forever

Come visit, and enjoy the many trees, (500+) gardens, shrubs, art works, and other features that enhance the beauty and meaning of Judean. Our memorial counselors will help you make the right choices.

DID YOU KNOW? JRLW members receive substantial discounts on burial sites, goods and services? Contact (JRLW) Lyle Wolinsky (301-325-2600) to receive your *Savings Voucher!*

"Abraham" is one of many art works created by artist P. Ratner for Judean

☆ **JUDEAN MEMORIAL GARDENS** ☆
 16225 BACHELLORS FOREST ROAD
 OLNEY MD 20832 | 301-384-1000 | www.judeangardens.com

Do you need to declutter and organize, but not sure where to start?
 Do you need assistance in downsizing your items to move only what is needed in your new residence?

Moving Forward is a client-centered Professional Organizing and Move Managing company. We provide services to assist individuals and their families with the emotional and physical aspects of:

- **HOME ORGANIZING**
 - We help you decide what to keep, trash, sell, and donate. Moving Forward has relationships with junk removal companies, donation centers, and estate sale companies.
- **MANAGING AND FACILITATING A DOWNSIZING MOVE**
 - We can introduce you to real estate agents and/or movers. Let us be the liaison with the vendor of your choice to allow for a stress-free move.
 - Moving Forward unpacks your belongings in an organized fashion that is easy to maintain and avoids the troubles and stress of living out of boxes.

CLIENT FOCUSED IS OUR FOCUS!
 It is our mission to create a safe, healthy, sustainable, and customized experience. We have the knowledge, experience, and expertise to help anyone who needs assistance.

"Judy is the gold standard for decluttering/organizing/moving programs. She has brains and brawn."
 - Amy Lechter

moving FORWARD
 Moving Forward Services, LLC
 Organizing, Downsizing, and Relocation Services
 www.MvntForward.com
 Info@mvtforward.com
 240-988-2018

**Jewish Residents of
Leisure World**
ASK ABOUT SPECIAL FUNERAL
PACKAGE OFFERS AVAILABLE
JUST FOR YOU.

ANDREW LINTHICUM
Director of Advanced Planning
Andrew@Sagelbloomfield.com



**SAGEL
BLOOMFIELD
DANZANSKY GOLDBERG**
FUNERAL CARE INC

VISIT US ONLINE

WWW.SAGELBLOOMFIELD.COM/PRE-ARRANGEMENTS

(301) 340-1400 ☎

1091 Rockville Pike · Rockville, MD 20852

sagelbloomfieldfunerals

PLAN AHEAD FOR *Peace of Mind.*

WE PLAN IN ADVANCE for bar mitzvahs, weddings, retirement and many other life events. So doesn't it make sense to also plan for the inevitable?

For information on pre-planning options and special rates for *Jewish Residents of Leisure World* members, contact **Jamie T. Arthurs** at (240) 463-6884 or Jamie.Arthurs@DignityMemorial.com.



HINES-RINALDI

FUNERAL HOME, INC.
11800 NEW HAMPSHIRE AVENUE
SILVER SPRING

(301) 622-2290

HinesRinaldiFuneralHome.com

TORCHINSKY

HEBREW FUNERAL HOME

The ONLY Independent Jewish Family Woman
Owned and Operated Funeral Home in the
Greater Washington Metropolitan Area

Joyce E. Torchinsky, M.S.Ed.

Licensed Funeral Director DC/MD/VA

***"Helping you make plans
120 years in advance..."***

202-541-1001 ✦ 301-495-3395 ✦ 1-800-500-5401

254 Carroll St., NW, Washington, DC 20012

Diagonally across from the Takoma Metro-Red Line

*"For everything there is a season, and a time for every purpose...
...a time to be born, and a time to die..." - Ecclesiastes*



*Twenty-nine Washington area congregations have chosen
the Garden of Remembrance as their official cemetery.*

Visit our beautiful new Memorial Center & Chapel

When you purchase family burial spaces at the Garden of Remembrance, your thoughtfulness will echo from generation to generation.

As a full-service partner to you and your family, in advance or at your time of need, our experienced staff can assist and care for all of your decision-making needs. We provide funerals at graveside, in our new Memorial Chapel, or in our Gazebo, and offer a wide selection of upright, slant, and grass-level granite and bronze memorials.



Garden of Remembrance
GAN ZIKARON MEMORIAL PARK

Serving the Jewish Community – One Family at a Time

For more information, call (301) 428-3000, or visit www.gardenofremembrance.org.
14321 Comus Rd., Clarksburg, MD 20871

OCTOBER

<i>Sun</i>	<i>Mon</i>	<i>Tue</i>	<i>Wed</i>	<i>Thu</i>	<i>Fri</i>	<i>Sat</i>
1	2	3	4	5	6	7
	JRLW Board Meeting 7:30 pm	•JWV Meeting •Hadassah Bd			Shabbat Service 7:30 pm 6:25	Shemini Atzeret Service
8	9	10	11	12	13	14
						Shabbat Service 9:15 am
15	16	17	18	19	20	21
JRLW BRUNCH	Hadassah Study Group 1:30 pm		Golf Outing 9:15			
22	23	24	25	26	27	28
Program – Israeli Dancers 2 pm			Jewish Capitol Museum			
29	30	31				30
	JRLE/JCC Movie					

2023



JEWISH RESIDENTS OF LEISURE WORLD

3700 ROSSMOOR BLVD.
SILVER SPRING, MD 20906

NON PROFIT ORG
US POSTAGE
PAID
SUBURBAN, MD
PERMIT NO. 3275

TIME CRITICAL INFORMATION
ADDRESS SERVICE REQUESTED



WE CELEBRATE OUR TORAH!!