



APRIL 2024

ADAR II - NISSAN 5784



JRLW

MEGILLAH

PLEASE VISIT THE JRLW WEB SITE - www.jrlwmd.org

PRESIDENT: Joel Kristal
photosbj@gmail.com

MEGILLAH EDITOR: Bernice Cohen
bernicecohen1@gmail.com



JOEL L. KRISTAL

FROM THE DESK OF THE PRESIDENT

Shalom:

Purim has passed with all the fun of the Shpeil and the readings from the Book of Ester. We can now look forward to our next holiday, Passover. We continue to celebrate our survival in the face of antisemitism. Today, the State of Israel is fighting for her survival; Jewish students are being threatened and harassed at our most prestigious colleges and universities; and Synagogues are being defaced. We see large rallies proclaiming death to the Jews. What frightens me the most is how fast the spark of antisemitism has exploded into a firestorm of antisemitism. That the "spark" has been burning slightly below the surface waiting for an excuse and Israel's action to defend itself was the excuse. Where are the efforts to curb this behavior? Where are the college rallies protesting the butchery of Hamas?

Where is the outcry to have the U.S. citizens held hostage by Hamas returned to us? Could the answer be as it has been for centuries, "It's only the Jews."

APRIL DATES

- 02 Tue – JRLW Board 7:30 pm
- 03 Wed – Trip to Theater J
- 05 Fri – Shabbat Service 7:30 pm
- 13 Sat – Shabbat Service 9:15 am
- 15 Mon – Hadassah Study Group 1:30 pm
- 17 Wed – Hadassah Program
- 21 Sun – JRLW Brunch 10:00 am
- 22 Mon – Erev Passover. Seder #1
- 23 Tue – Passover Day 1. Seder #2
- 30 Tue – Passover Service/Yizkor

APRIL JRLW BRUNCH

Stan Feinstein

Our next JRLW brunch will be held in the Clubhouse I Crystal Ballroom on Sunday, April 21, 2024, beginning at 10 am (check-in begins at 9:30 am). We are extremely pleased to announce that our speaker will be Cantor Michael Kravitz. He will be speaking about his experiences as a Jeopardy contestant.

Tickets are available at Clubhouse I Lifestyle Office thru April 15. The brunch, which is **open to JRLW members only**, costs \$21.00 per person. Tables may be reserved for up to 10 people. Payment is by check, only, made out to JRLW.



CONTINUED ON PAGE 2

President's Message

CONTINUED FROM PAGE 1

As always, an excerpt from Rabbi Sachs (of blessed memory) is worth repeating.

Short Thoughts for Pesach

"Pesach is the oldest and most transformative Story ever told. It tells how an undistinguished group of slaves found their way to freedom from the greatest and longest-lived empire of their time, indeed of any time. It tells the history of how the Supreme power intervened in history to liberate the supremely powerless. It is a story of the defeat of probability by the force of possibility. It defines what it is to be a Jew; a living symbol of hope."

Great empires come and go, but we Jews live on. How do we do it? "By the process of handing our story on to the next generation. That is what we do on Pesach. We give the next generation the gift of the Jewish story, and that slender ritual turned out to be longer lasting than the mightiest empires and their greatest monuments."

I started this column in a very somber way and Rabbi Sachs closing can give us hope that we will persevere. This year, JRLW will not be sponsoring a Seder and inside the Megillah you can find local resources providing this service.

Chag Samech to you and all you hold dear.

JRLW OFFICERS

PRESIDENT – Joel Kristal
 ADMIN VP – Al Bodley-Davis
 SECRETARY – Adele Ewing
 TREASURERS – Marsha Bernstein
 Beverly Masters

**NOTICE: THE DEADLINE FOR THE
 MAY MEGILLAH IS APRIL 10. ARTICLES
 SUBMITTED AFTER THAT DATE WILL
 APPEAR IN THE JUNE MEGILLAH.**

**MORE THOUGHTS ON
 KEEPING KOSHER**

Shirley Charney Feldman

I grew up in a Jewish home, but we were not 100% kosher. Still, my father, of blessed memory, worked at Silbert's Kosher Market, so we always ate the "best" kosher meats. In 1991, I became an ethical vegetarian as an act of tikkun olam for all the wonderful non-human animals with whom we share our world.

About a year later, I suddenly realized that I now kept kosher - and it was so easy! A wonderful plant-based/vegetarian/vegan diet benefits our own health, the animals who will not be killed to satisfy our palates and our only home – planet earth.

Interested in decreasing your carbon footprint and increasing your intake of meatless meals? There are plenty of Jewish, as well as, non-religious vegetarian/vegan organizations who can provide guidance. Happy kosher eating!

**ATTENTION: CONTRIBUTORS
 TO THE MEGILLAH!**

**In order to contain the rising cost of
 printing the Megillah,**

**PLEASE KEEP YOUR ARTICLES TO
 ONE COLUMN OR LESS.**

THANK YOU.

MEGILLAH STAFF

Bernice Cohen – Editor
 Barbara Cronin
 Betty Hecht
 Sharon Freedman
 Marcia Crystal – Food Editor
 Fred Shapiro- Business Mgr.

JEWISH JEANS

Bernie Ascher ©

Levi Strauss was not the only inventor of blue jeans--- the product that bears his name and brought him riches and world fame. It was a joint effort with Jacob W. Davis, who shared the patent with Strauss.

In 1870, in response to a customer request at his store in Reno, Nevada, Davis designed a pair of pants for her husband that would not burst at the seams. Using a heavy twill fabric he had purchased from Strauss' San Francisco store, Davis designed the pants, adding copper rivets he used for cattle drivers' horse blanket straps for further support. He sold the pants, then known as "overalls," to the lady for \$3 (equivalent to about \$75 in today's money).

The product became very popular in San Francisco's bustling economy among miners, surveyors, and laborers. However, the volume of sales overwhelmed Davis (200 pairs in the next 18 months, according to one report) and he lacked the money for a patent and manufacturing equipment.

Davis invited Strauss to join him in a business venture to patent and mass-produce the product. Strauss accepted. In 1873, the U.S. Patent Office awarded a patent for blue jeans to the two immigrant tailors.

Born in Riga, Latvia in 1831, Jakobs Jufess (or Jacob Youfess), emigrated to the U.S. in 1853, where he changed his name to Davis. Between 1858 and 1867, Davis worked at various jobs, including gold panning in Canada. In 1865, he married Annie Parksher from Germany and had six children. He returned to the U.S. and opened a tailor shop in Reno, Nevada, making wagon covers and tents. He became an American citizen in 1871. After jointly receiving the patent for "overalls," Levi offered Davis the job of overseeing factory production of the product in San Francisco. Davis accepted the job and spent the rest of his life there.

Levi Strauss, originally Loeb Strauss, born in 1829 in Bavaria, left Europe with his mother and two sisters in 1847 to join his two brothers (Jonas and Louis), who were running a textile business in New York. Levi went to Louisville, Kentucky to sell his brothers' supplies there. He became an American

citizen in January 1853.

In February 1853, Levi joined his sister Fanny Stern in San Francisco, running a West Coast branch of the family dry goods business. The town was booming because of the California Gold Rush. The wholesale business there specialized in selling clothing and bedding to small dry goods stores in California, supplied by his brothers in New York. Tents and jeans followed, including the patented jeans made in San Francisco.

Levi Strauss was never married. He died on September 26, 1902, in San Francisco. His estate was worth about \$30 million (equivalent to \$165 million in today's money). Around 1907 Davis sold his share in the patent and production to Levi Strauss & Co., but remained head of the factories until his death the following year.

Levi donated to various charities, helping to establish one of the first synagogues in San Francisco (Congregation Emanu-El), special funds for orphans, and establishing the Levi Strauss Foundation, providing 28 scholarships for University of California, Berkeley.

Levi's nephew Sigmund's only child, Elise, married Walter Haas, the son of Abraham Haas, whose descendants are the current owners of Levi Strauss & Co.

Levi Strauss & Co. purchased the naming rights for an Francisco's 49ers football stadium for \$220 million over 20 years, beginning in 2014.



WE REMEMBER



Edith Dugoff.
 Jerry Rosenthal.
 Shirley S. Gordon.
 Harvey Sonin.
 Marvin Smith.
 Marc Levin.
 Deborah Becker.

May Their Memory Be As A Blessing.

CANTOR'S CORNER

Michael Kravitz



Many of you have attended the monthly Sunday brunches sponsored by JRLW. These brunches are a great opportunity to get together with JRLW friends, have something to eat, and see what is, hopefully, an entertaining program. I'm going to use this column to talk about the Sunday morning program for the brunch on April 21, 2024. I know it will be right before Pesach, a busy time for just about everybody. But if you can plan ahead so that you can attend, it will be worth the effort. The program will be titled "SO YOU WANT TO BE A JEOPARDY! CONTESTANT," and it will be led by someone who appeared on the program as a contestant. This contestant wrote about his experiences in a series of articles that were published in what was then called the JRLW newsletter, now known as the MEGILLAH. Those articles were the first ones published in the spring of 2015 in what was then a new column called CANTOR'S CORNER. Nine years later, that author will present an interactive program which will show everyone in attendance what it was like to try out for the program and what happened once he made it. The presenter's name is MIKE KRAVITZ.

My decision to try to become a JEOPARDY! contestant didn't start when Alex Trebek started hosting JEOPARDY! in 1984. It started 20 years earlier when JEOPARDY! was on NBC and was hosted by Art Fleming. I was a junior in high school and first saw the program during spring break. It would be 32 years before that dream became a reality, and there were a lot of twists and turns along the way. Part of the program on April 21 will involve giving each of you the chance to try out the type of questions would-be contestants have to be able to answer. You might be surprised at how challenging those questions are.

So, please make your reservations, and I look forward to seeing you in person on April 21. In the meantime, wishing each of you a "Zissen Pesach (a sweet Pesach)," and I hope this truly is a festival of freedom for all. JRLW will hold services for the

eighth day of Pesach, which will include YIZKOR, on Tuesday, April 30, at 9:15 am. It will be held in the Activities Room of Clubhouse II. Once again, I hope to see each of you in person.

Be well. Stay safe.

NEW MEMBERS

We welcome new members and new Lifetime members!

Jay and Karen Bycer
5409 E. Milton Drive
Cave Creek AZ 85331

Arthur Okrend
15107 Interlachen Drive, #901
Silver Spring MD 20906

Carol Cohen
3100 N. Leisure World Blvd., #519
Silver Spring MD 20906

Michael and Bonnie Uditsky
3100 N. Leisure World Blvd., #312
Silver Spring MD 20906

LIFETIME MEMBERS

Arlyne Klein
2900 N. Leisure World Blvd., #103
Silver Spring MD 20906

Jim and Sherri Lieberman
3200 N. Leisure World Blvd., #706
Silver Spring MD 20906

Howard and Judith Newell
3352 Chiswick Court, #2F
Silver Spring, MD 20906

CANTOR WENDY GONZALES

Music and Passover



cantorwendyg@gmail.com

Comedian Harmonists – Bringing together brilliant talent only to be destroyed by hatred and jealousy

There is one aspect of the seder that we all look forward to and that is during the “reading” of the Haggadah, we sing many songs. There is a joyful anticipation of the music and singing. While we all may have a variety of melodies for certain songs and prayers, at least two consistent melodies appear to be practically universal. That would be Dayenu and Eliyahu Hanavi. While I believe there is also only ONE ***Chad Gadya, Adir Hu, Let My People Go, Avadim Hayinu*** and ***Echad Mi Yodea***, I have discovered now as an adult, AND a senior one at that, the melodies of my childhood apparently were not the ONLY melodies for these Pesach songs! And who taught me these (what I thought were) original and “the REAL” melodies? The answer is my father. These Pesach songs have such an impact in our tradition, that even though my father passed away 27 years ago, my sons are insistent that we sing EVERY song and put the spirit in it that my father encompassed, making these traditions now almost surpass seven decades of his influence. The idea of this tradition is so powerful and fills my heart.

I have introduced for my sons and granddaughters a few of the “newer” songs for the younger generation that they learn in Sunday school such as ***One Morning When Pharaoh Woke in His Bed, Bang Bang Bang*** (about building the pyramids), ***I’m Gonna Find It*** (the Afikoman), etc. And now, this has also become de rigueur during our seder! My hope and expectation will be that our granddaughters, Aubrey and Madeline, will continue to incorporate these songs in their seders decades from now.

So, this would probably lead into another verse for the song ***Tradition*** from Fiddler; but it helps me understand that while the melodies may differ, the joy of singing together at the table for Pesach is an inextricably important part of our holiday beyond the amazing food and the historical aspect of the story that we share as families and friends. I

hope you can join us for our Erev Shabbat service on Friday evening, April 5, 2024, at 7:30 pm, in Clubhouse II, where we will be integrating some of these beautiful melodies into our service to help us joyfully anticipate this wonderful holiday!

Wishing all my dear JRLW friends a very happy and fulfilling Pesach.

RELIGIOUS SERVICES FOR APRIL

On Friday, April 5, we will have an evening Shabbat Service in Clubhouse II at 7:30 pm. These Services will be conducted by Rabbi Gary Fink and Cantor Wendy Gonzales. Shir Delight will provide their beautiful voices. An Oneg will follow the Service.

There will be a Conservative Shabbat Service on Saturday, April 13, in Clubhouse II at 9:15 am. Cantor Mike Kravitz will conduct the Service. There will be a Kiddush following the Service.

We will have a Service on Tuesday, April 30, in Clubhouse II at 9:15 am. This Service will include Yizkor.



GOOD AND WELFARE

We send our wishes for a speedy recovery to Betty Hecht.

Carole Jason, our Leap Year baby, just turned 22! Happy Birthday, Carole.

We send our prayers for a speedy healing to Suzy Klein, who fell and broke a bone in her leg.

Mazel tov to Eileen Ansher on the birth of a grandchild.

JUNE IS GRANDPARENTS QVELLING TIME!
Don't forget to send in your items by May 10.



RITUAL COMMITTEE

Ellyn Kaufman

Shalom dear friends,

The month of April is upon us which means PESACH is around the corner! Passover, a holiday which goes by many names, is probably the most observed major holiday in the home, of all Jewish holidays. Hanukkah is a minor holiday.

Passover, Pesach, *Hag Hamatza* (holiday of Matza), *Z'man Heruteinu* (time of our freedom), *Hag Ha'aviv* (holiday of Spring) are other names for this tradition filled time of the year. Passover begins on the evening of April 22 with the first seder. This year, when we recount the iconic story of our ancestors' liberation from Egypt, it can deepen our resolve to tackle oppression today — from the freeing of ALL the hostages, to antisemitism, racism, the climate crisis, and other plagues amongst us today. Acting on Passover's ancient call for freedom, we can hasten freedom for our Israeli brethren to religious and ethnic minorities, and other marginalized groups around the world.

If you have an extra place or 2 at your seder, please let me know via email before April 10; or if you need a seder to attend, please let me know via email before April 10 so I can try to make a "*shiduch*" (match). I will be out of the country as of April 19, so I must know in advance, to be able to assist you.

We are always grateful to our members when you choose to celebrate your special occasion by sponsoring a Kiddish or Oneg. This month we are grateful to Robin Lisa Rosenberg for generously supporting the Friday night Oneg on April 5 in memory of beloved people from her life. Do you have an occasion to commemorate for the community, or even just a wonderful way to honor yourself? Please email me and we'll make it happen!

Do you have special traditions for your family during Pesach? We always put an orange on our seder plate and end with chanting Pesach songs.

Why an orange? In the mid-1980s, Susannah Heschel put an orange on her seder plate as a symbol of inclusion of **all** Jews. This year, many seder tables will have empty seats representing the October 7 victims, hostages and soldiers who are unable to return home for the holiday. Maybe that

is something you might consider at your seder.

However you celebrate, wishing you and yours a meaningful and joyous Pesach this year!

Kol tuv,

Ellyn Becker Kaufman
Chair-Ritual Committee
ellynsu@verizon.net

TZEDAKAH, KIDDUSH AND ONEG DONATIONS

For information about Tzedakah, Oneg or Kiddush donations, please call Susan Weiss at 301-460-6030. Checks should be made out to JRLW and mailed to Susan Weiss, 3739 Glen Eagles Drive, Silver Spring MD 20906.

TZEDAKAH DONATIONS

Esther Goldstein to Carole Mund in memory of her husband, Bob Mund.

Martin Hoffman in memory of Sue Schwartz who passed away recently.

Martin Hoffman in memory of Deborah Schwartz, daughter of Sue and Sid Schwartz.

Mim and Bob Schultz to Barbara Jacobowitz in memory of her husband, Herb Jacobowitz.

Oneg donation by Elen Goodman to Richard Rothstein, wishing him restored health after his surgery.

Oneg donation by Robin Lisa Rosenberg in memory of her father Howard, who would have been 90 on March 23, and in memory of her best friend, John Stigi, who passed away in 2001.

Shirley Light to Dora Levin in memory of her husband Mark Levin.

Susan and Jonas Weiss to Dora Levin in memory of her husband Mark Levin.



HADASSAH

Sandy Stein

The Music of Debbie Friedman

On Wednesday, April 17, at 2 pm in the in Clubhouse I, the Ruach Chapter of Hadassah will present a program on the life and music of Debbie Friedman (1951-2011).

This program is rescheduled from January. Our presenter will be Cantor Margey Auerbach who led a discussion on the history of Israeli Music last May. We will learn about how Friedman's music changed the face and sound of Jewish liturgical music. An early pioneer of gender sensitive language, participatory singing and combining of Hebrew and English texts, many of her compositions are now "traditional" songs in synagogues around the world. Her setting of the Mi Shebeirach healing prayer was central to creating meaningful healing services in all streams of Judaism.

Marge Auerbach is Cantor Emerita of Bet Aviv, a Reform Congregation in Columbia, Maryland, which she served for 14 years. Her career as a cantor followed 31 years as an educator in Montgomery County Schools as a teacher, reading specialist, teacher trainer and elementary school principal. She studied education and music at Smith College and received her M.Ed. and PhD in Education at the University of Maryland. In addition to conducting Shabbat services and presenting adult education programs, she is an active singer and conductor in Montgomery Hospice Threshold Choir, singing for hospice patients throughout Montgomery County.

Please join us for an enjoyable program of listening, learning and singing along to the music of Debbie Friedman, may her memory be a blessing. There will be a \$5.00 fee paid at the door either by cash or check to Hadassah. Refreshments will be served.

The Judaic Study group will meet on zoom, April 15, at 1:30 pm. The topic will be, "Taking a risk—what we might learn from Nachshon stepping into the Sea of Reeds."

Marcia Elbrand will be the moderator for this session. Everyone is welcome to attend. The zoom

link is the same as March. If you need the zoom link contact Marilyn Jordan at mjordan2262@comcast.net.

Hadassah encourages women of any faith to join as an annual or life member. If interested in knowing more about Hadassah, contact Linda Epstein at 301-847-9650.

Hadassah cards for any occasion are available. Contact Elaine Schenberg at 301-598-0079.

SOCIAL ACTIVITIES COMMITTEE

Fred Springer

I hope all of you enjoyed the visit to the chocolate factory at JCRAFTS in Rockville. We all made some delicious chocolates and learned about the role of chocolate in Jewish history.

For our next exciting event, a limited number of tickets are available for the show, **Beautiful: the Carole King Musical**, at Olney Theater on July 25 at 7:30 pm. Tickets are center orchestra. The show tells the story of the early life and career of Carole King, using songs she wrote: ***So far away, Some kind of wonderful, Up on the roof, You've lost that loving feeling*** and more. Her second album, *Tapestry*, went platinum. Born Carole Joan Klein, she is one of the most successful female song writers of the 20th century. Tickets are \$55 each. Send a check made out to JRLW to Adele Ewing, 15115 Interlachen Drive, apartment 304, Silver Spring, MD. 20906.



If you have a social activity to propose and will lead a group of our committee members to bring it to life, please join us by contacting Fred Springer by text to 301-213-5482.

PROGRAM AND EDUCATION

Becky Siman

Thank you to those who helped distribute the Sunflower Bakery Purim Pastries. This column was due before the event happened, so this is a general thanks at this time.

April is a short month for programs because of the Passover holiday. While there is a trip to Theater J, a Brunch, and a Yizkor Service, it does not leave a lot of dates of additional programs. However, we ramp up in May.

Thursday, May 2, Bus Trip to see the Orioles vs the Yankees at Camden Yards. The bus will leave from the front of Clubhouse II at 12:00 pm to take the group to the shady seats. The cost is \$72 which includes the tickets, the bus and tips. Invite your friends to join you. You need to send the flyer with a check to secure your reservation by April 20. Direct your questions to Sue Sandler on 301-219-4449. See the flyer for details.

Thursday May 9, 2 pm. Crystal Ballroom, Clubhouse I. Yom HaShoah Concert: *We Remember*, sponsored by JRLW and Bender JCC Coming of Age. Join the Iris Piano Trio and Yiddish vocalist Frieda Enoch for an afternoon of music commemorating Yom HaShoah - Holocaust Remembrance Day. The musicians present beautiful music that showcases the power of the human spirit despite the darkest of days. Against all odds, faith, hope and music have always emboldened us and made us more resilient. Tickets can be purchased at Clubhouse I for \$15 by check made out to JRLW from April 9 to May 8. See the flyer for more details

Tuesday, May 21, Auditorium, Clubhouse II, 1:30 pm. A documentary film, *Remembering Gene Wilder*. Sponsored by Bender JCC and JRLW.

THIS FILM IS BEING SHOWING AT MANY JEWISH FILM FESTIVALS.

Few comedic actors have left a more indelible mark on our culture than Gene Wilder, whose performances in such classics as *The Producers*,

Young Frankenstein, and *Silver Streak* made him one of the most beloved stars of his era. This heartfelt documentary takes a close look at the life and career of an American original, starting with his Jewish upbringing in Milwaukee. He was known as an around mensch. He passed away in 2016. Tickets will be available at Clubhouse I for \$10 by check made out to JRLW from April 23 through May 20. It will be \$12 at the door. The film is 90 minutes. See the flyer for more details.

TORAH and PRAYER BOOK FUNDS

Individuals can be honored and loved ones memorialized with a contribution to the JRLW Torah or Prayer Book Fund for a minimum donation of \$25.00.

PRAYER BOOK FUND

If you would like to make a donation in honor of or in memory of someone in a Reform prayer book, Conservative Prayer book or a Chumash (Bible), please stipulate which one in your request. Please send your requests to donate prayer books to Florence Kasden, 3100 Leisure World Boulevard, #610, Silver Spring MD 20906. Her phone number is 410-251-9382.

Eileen Ansher donated a Conservative Prayer Book in honor of her new grandchild.



TORAH FUND

For contributions to the Torah Maintenance Fund, send your check, made out to JRLW, to Carol Wendkos, 14805 Pennfield Circle, #212, Silver Spring, MD 20906.



MEMBERSHIP COMMITTEE

Linda Nelson

Spring is in the air at Leisure World with all the plantings coming to bloom along with the vibrant JRLW religious, educational and social activities.

Our membership continues to grow month by month. Remember our new registration is from January 1-December 31, 2024, but you must pay dues by May 31 to be a member in good standing for 2024. The registration form can be found in Megillah and online www.jrlwmd.org.

You must be a member to join certain activities that JRLW sponsors. If you will be attending member only activities with a significant other, please register "Dual" as noted on the membership form. Encourage those who are not members to join.

Our monthly Members-Only Brunches are our most popular and well attended events. Volunteers would be appreciated to support our check-in process and 50-50 raffle for April and May. Please contact Nancy Grossmen at 301-455-5243.

To see a full list of our events and activities published on our JRLW website www.jrlwmd.org and our closed JRLW private Facebook page. We currently have 183 members on our Facebook. Our closed group is used to provide calendar of events, discussion groups, announcements, information about cultural events and Judaic content as well as messages between members.

If you would like to join our private JRLW Facebook, please contact Alan Nelson at apnelson8@yahoo.com, or Carol Wendkos at carolwendkos@gmail.com.

Please send get wells to Suzy Klein who suffered a fall recently.

Have a wonderful April and thank you for being a member of the Jewish Residents of Leisure World.

Linda Nelson – lpnelson3@comcast.net
301-922-1793

Suzy Klien – smklien.advocate@gmail.com
301-789-9667



ON THE LIGHTER SIDE

It's Yom Kippur. The rabbi, who's addicted to golf, goes out and plays a few holes before services. First hole, he makes birdie. Up in heaven, Moses turns to God and says, "You let him make a birdie playing golf on Yom Kippur?!"

- God says, "Just watch."
- On the second hole, the rabbi makes an eagle.
- Moses frowns, can't believe what he's seeing.
- Then, on the third hole, the rabbi makes an unbelievable hole in one!
- Moses turns to God with outrage, "God, what are you doing, letting him get a birdie, an eagle, and a hole in one?!"
- God looks over at Moses and responds, "Who's he going to tell?"

RECIPE CORNER



PASSOVER RECIPES

ONE BOWL SPONGE CAKE

9 eggs, separated
1 1/2 cups sugar
1 Tbsp lemon juice
1/2 cup cake meal
1/4 cup potato flour

Preheat oven to 350°. Beat egg whites with sugar for about 5 minutes. Add yolks and lemon juice while beating. Continue beating and add cake meal and potato flour. Beat until thoroughly mixed. Pour into ungreased tube pan and bake for 50 minutes. Invert pan for 1 hour.

MATZO FARFEL MUFFINS

2 Cups matzo farfel
3 tablespoons matzo meal
3 eggs, beaten
1 tablespoon vegetable shortening
1/4 teaspoon cinnamon
1/3 cup raisins

Soak farfel in cold water for 5 minutes. Squeeze out water. Add all ingredients and mix well into farfel. Pour mixture into greased muffin tins. Bake in 425° oven for 35 minutes. Makes 12 muffins.

Recipes

CONTINUED FROM PAGE 9

SIMPLE APPLE MATZO KUGEL

4 sheets of egg matzo
 2 cups apple juice
 1/2 tsp salt
 1/4 cup oil
 2 apples, peeled, cored and cubed
 3 eggs, beaten
 1/2 cup sugar
 1 tsp ground cinnamon
 1/2 cup raisins

Break matzo pieces, soak in apple juice until soft. Drain well. In separate bowl, mix together eggs, salt, sugar and cinnamon. Add the soaked matzo and mix well. Fold in apples and raisins. Spoon into greased 8x8 baking dish. Bake in 350° oven for 45 minutes until nicely browned.

APPLE MATZO KUGEL #2

Marcia Crystal

2 cups matzo farfel or 3 1/2 matzos, broken into small pieces.
 1 cup apple juice
 1 cup fat-free egg substitute
 1/4 cup plus 2 tablespoons sugar
 1/2 teaspoon cinnamon
 2 1/2 cup finely chopped tart apples
 1/2 cup golden raisins

Topping:

1 tablespoon finely ground walnuts
 1 tablespoon sugar

Combine topping ingredients and set aside. Place matzo farfel in large bowl. Add apple juice and stir to mix well. Set aside for 5 minutes. Add egg substitute, sugar, cinnamon and matzo mixture. Stir gently to mix well. Stir in apples and raisins.

Coat 8-inch square pan with nonstick cooking spray and spread mixture evenly in pan. Sprinkle with topping. Bake in a 350° oven for 40 minutes or until knife inserted in center comes out clean.

DAIRY SPINACH KUGEL

1 cup frozen chopped spinach, very well drained
 3 cups farfel soaked and drained
 3/4 cup cottage cheese
 small pkg cream cheese (3 oz)
 4 eggs, separated
 1 chopped onion
 1/4 cup margarine
 1 tbsp oil
 salt and pepper to taste

While browning onion in 1 tbsp oil, drain spinach and farfel. Separate eggs. Beat whites until stiff. Melt margarine. Mix all ingredients except egg whites in large bowl. Gently fold in stiff egg whites. Pour into a greased baking pan (I use the disposable aluminum 9x9 pan.) Bake in 350° oven for about 40 minutes. Serve warm.

ROASTED CAULIFLOWER AND SWEET ONION KUGEL

Stephanie Altbier

Prep time: 35 min. Cook time: 1 hour 10 min.
 Serves 8

1 large onion
 1 head cauliflower
 1/2 cup matzo meal
 3 tbsp dill chopped
 3 tbsp flat leaf parsley chopped
 3 tbsp olive oil
 1/2 tsp salt
 1/2 tsp pepper
 1 tbsp honey
 4 large eggs, beaten

Preheat the oven to 450 degrees. Roughly chop the onion. Remove core from cauliflower and separate into florets. In a large bowl, mix together the matzo meal, dill and parsley. Set aside. On a large baking sheet, toss onion and cauliflower with olive oil, salt and pepper. Bake for 25 minutes. Carefully remove baking sheet and drizzle vegetables with honey. Roast until golden brown, about 5-10 minutes. Remove vegetables and lower heat to 375 degrees. Pulse cauliflower and onion in a food processor until finely chopped. Add cauliflower mixture and beaten eggs to matzo meal and herbs. Mix until well combined. Pour into a well-greased 9x9-inch baking pan and bake until golden brown and set, about 35 minutes. Cut into 8 squares and serve.



JEWISH RESIDENTS OF LEISURE WORLD

***For a Fun Afternoon, Join the Bus Trip to Camden Yards, Baltimore
Thursday, May 2, 2024***



Afternoon Game

Seats are in the Shade for Orioles vs Yankees

Bus Leaves Leisure World at 12 p.m.

Will Return After the Game

\$72 includes Bus, Tip, and Game Ticket

*To purchase a ticket(s), fill out the form below and send it with your check,
payable to JRLW, to*

Sue Sandler

15115 Interlachen Drive, Apt 603, Silver Spring, MD 20906

Questions? Call Sue on 301 219-4449

Reservations Taken Only with a Form and a Check

Forms Due by April 15

Please Indicate How Many Tickets You Want and Return this Section

_____ of Tickets @ \$72 each: Total Amount \$ _____

Your Name and Address: _____

Your Phone: _____

Your Email: _____



Jewish Residents of Leisure and the Bender JCC Coming of Age

**Thursday, May 9, 2 p.m.
Clubhouse I Crystal Ballroom**

Yom HaShoah Concert: We Remember



Join the Iris Piano Trio and Yiddish vocalist Frieda Enoch for an afternoon of music commemorating Yom HaShoah - Holocaust Remembrance Day. The musicians present beautiful music that showcases the power of the human spirit despite the darkest of days. Against all odds, faith, hope and music have always emboldened us and made us more resilient.

The Iris Piano Trio, composed of pianist Jiyoung Oh, violinist Joanna Owen and cellist Lauren Latessa, performs all over the Mid Atlantic area, bringing joy to the audiences.

Frieda Enoch: Frieda Enoch is the Director of Bender JCC's Coming of Age (COA) Adult Engagement Program. Both of Frieda's parents were survivors of the Holocaust and Yiddish was the primary language spoken at home when she was growing up. She sings today in honor of her parents' legacy. She is on a mission to keep this beautiful language and musical tradition alive!

**Pick up your \$15 ticket at the Lifestyle Office in Clubhouse I
from April 9 to May 8. Make checks payable to JRLW.**

JRLW Sunday Brunch

April 21st at 10:00am

Cantor Michael Kravitz

“My Experience as a Jeopardy Contestant”

Crystal Ballroom, Clubhouse I

Includes full Sunday brunch buffet

Price is \$21.00 per person (MEMBERS ONLY!!)

✓ Make checks payable to JRLW

Pay by check only at the Clubhouse / Lifestyle office

Tickets are available for purchase,

March 19 to April 15 at Clubhouse I

- ✓ We will place you at a reserved table. If there are other members with whom you would like to sit (tables of up to 10), please list them.**
- ✓ All seats must be paid for at the time of purchase to reserve a table or partial table. Only checks accepted for payment. No refunds on tickets. No tickets will be sold after the cutoff date.**

Name(s):

Phone Number:

Email Address (Optional):

- ✓ Please bring this form with you to purchase your tickets.**
- ✓ Seat assignments will be given at the reception/check-in tables beginning at 9:30am.**



**Jewish Residents of Leisure and the
Bender JCC Coming of Age**

**Tuesday, May 21, 1:30 p.m.
Clubhouse II Auditorium**

Remembering Gene Wilder



Few comedic actors have left a more indelible mark on our culture than Gene Wilder, whose performances in such classics as *The Producers*, *Young Frankenstein*, and *Silver Streak* made him one of the most beloved stars of his era.

This enrapturing and heartfelt documentary takes a close look at the life and career of this American original, from his Jewish upbringing in Milwaukee, to his early stage work, to his breakthrough collaborations with Mel Brooks and Richard Pryor, to his marriage to Gilda Radner and beyond. Using a variety of touching and hilarious clips and outtakes; never-before-seen home movies; narration from Wilder's audiobook memoir; and interviews from a roster of brilliant collaborators including among other, Mel Brooks, and Peter Ostrum, who portrayed Charlie in one of Gene's most memorable roles, *Willy Wonka and the Chocolate Factory*. This film shines a light on an essential performer, writer, director, and all-around mensch. This documentary was made in 2023 in English, and is 90 minutes.

Tickets will be available at Clubhouse II Lifestyle Office from April 23 – until May 20. Tickets are \$10 in advance and \$12 at the door. CHECKS ONLY MADE OUT TO JRLW.

JRLW MEMBERSHIP

As announced in the November Megillah, we are changing our fiscal year to January 1 – December 31. We are asking that you pay your dues for 2024 any time between January 1, 2024 – May 31, 2024. Whatever date you choose, your payment will be good for all of 2024.

Please Note – In order to attend our “Members Only” Events – such as the brunches, you must be a member.

Please fill out the form below so we can make sure your information is correct. Make your check payable to JRLW. You can either drop the check off in the mailbox in Clubhouse I or mail it to the address below.

**BEVERLY MASTERS – JRLW
3378 Chiswick Ct., # 2E
Silver Spring, MD 20906**

_____ Individual (\$25) _____ Couples (\$45) _____ Life* _____ New Member

Name: _____

If all the information below is the same as last year, just put SAME

Address: _____

Phone Number: _____

Email Address: _____

We ask for your email address so we can send you important and time-sensitive messages

*LIFE MEMBER

You may also want to consider becoming a Life Member. Life Membership is a way of showing support and commitment to JRLW. It also means you do not have to pay your annual dues in the future. The chart below, based on age, shows the cost of Life Membership, **per person**.

<u>AGE</u>	<u>COST (per person)</u>
64 and under.....	\$375
65-69	\$300
70-74	\$285
75-79	\$225
80-84	\$175
85+	\$100

Let Your Bright Life SHINE



At Brightview Senior Living, we do it right. Activities and entertainment are available all day, every day. Great dining in a variety of venues is within reach – so no driving (or cooking) is required. Friends and neighbors are always nearby, so isolation is never an issue. A dedicated staff provides support, if it's needed, and takes care of all those pesky chores.

We invite you to explore our gorgeous community, where happy, longtime associates, a vibrant lifestyle, and personalized support empower area seniors to *live brightly*.

Independent Living | Assisted Living | Dementia Care | Enhanced Care
Schedule Your Visit Today.

BRIGHTVIEW
 SENIOR LIVING

www.BrightviewSeniorLiving.com

**Exceptional Living.
 We're in the Neighborhood.**



BETHESDA

Brightview Grosvenor | 301.615.0119
 Brightview Woodmont | 866.838.2380

ROCKVILLE

Brightview Falls Grove | 855.716.3836
 Brightview West End | 855.431.3475



*Let Your
Bright Life*
SHINE



Brightview's award-winning communities make life extra bright for area seniors and their families.

We invite you to explore our gorgeous communities, get to know our teams, and discover how Brightview's personalized services, support, and enriching lifestyle can make life brighter for you, too.

Independent Living | Assisted Living | Dementia Care | Enhanced Care
Schedule Your Visit Today.

BRIGHTVIEW
SENIOR LIVING

www.BrightviewSeniorLiving.com

**Exceptional Living.
We're in the Neighborhood.**



BETHESDA

Brightview Grosvenor | 301.615.0119
Brightview Woodmont | 866.838.2380

ROCKVILLE

Brightview Falls Grove | 855.716.3836
Brightview West End | 855.431.3475



Leisure World trusts **Family & Nursing Care**



As a premier resource for in-home care services, Family & Nursing Care helps families rest easy, knowing their loved ones are well supported. From that first cup of coffee in the morning to a sacred bedtime ritual to an unexpected need in the middle of the night, **we are here for you.**

To learn more, come meet **Kelly** and **Jeff** in our office in the Leisure World Medical Center.



3305 N. Leisure World Blvd. familynursingcare.com (301) 588-8200

REHABILITATION

RETURN TO THE
LIFE YOU LOVE

Brooke Grove Rehabilitation and Nursing Center's innovative place to heal and revitalize is simply different from any other option in the region.

A STATE-OF-THE-ART REHAB CENTER

Fully dedicated to short-term rehab • Two-story physical therapy gym bathed in sunlight • Leading-edge therapies for faster healing • Expansive guest rooms with luxury bathrooms • Restaurant-style dining with sunset views • Fireside gathering places • Covered porches, courtyard garden and walking trails • Salon • Spa with massage room and soaking tub

SIMPLY DIFFERENT ...
BECAUSE WHAT SURROUNDS YOU **REALLY MATTERS.**



BROOKE GROVE
RETIREMENT VILLAGE

18100 Slade School Road
Sandy Spring, MD 20860

301-637-8928

www.bgf.org



INDEPENDENT LIVING ASSISTED LIVING REHABILITATION
LONG-TERM CARE MEMORY SUPPORT

HOSPICE



ESCORTED
TRANSPORTATION



IN-HOME
SUPPORT



CARE
COORDINATION



MENTAL
HEALTH



jssa

Medicare and Most Major
Insurance Accepted.

JSSA.org

JSSA is the trusted health and social wellness agency that helps neighbors and their families through their most vulnerable moments with warmth and acceptance.

Everyone needs support at some point. Our goal is to make essential care and quality of life accessible to everyone.



Partner Agency of
The Jewish Federation
OF GREATER WASHINGTON

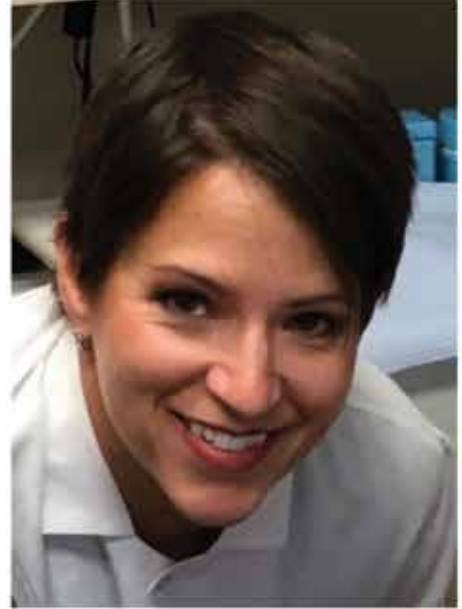


Call us at 240-800-JSSA to find
out how we can help.



 **THE DENTAL OFFICE AT LEISURE WORLD**
301-598-1015

CARMEN LANIO DEVRIES, DDS



**OPEN FOR
ROUTINE CARE**

Conveniently located in the
Leisure World Medical Center



**ACCEPTING NEW
PATIENTS**



Enhanced Safety Protocols

- ✓ Dedicated entrance for dental patients
- ✓ Temperature checks
- ✓ Masks required for entry
- ✓ HEPA air purifiers
- ✓ Augmented PPE for staff

3305 N. LEISURE WORLD BLVD
SILVER SPRING, MD 20906

ABOUT US

As a part of the Leisure World community for over 40 years, our conservative practice philosophy focuses on prevention and maintaining health and function. We cater exclusively to older adults.

Savings up to
\$8,519

Spring into Savings!

Select Ring House Apartments
Take possession by **APRIL 30, 2024**

**One month FREE rent and 25% off
your community fee!**

Inventory is limited. Act fast to secure your preferred apartment and save.

Schedule a tour to learn more about these incentives and additional savings.
Call us today at **301-450-7097**.

**Limited time only. Market rate apartments only. See sales associate for details.*



Charles E. Smith
LIFE COMMUNITIES

1801 East Jefferson Street
Rockville, MD 20852

www.smithlifecommunities.org



Complimentary Events for Positive Aging

Rockville's most interesting 62+ community invites you to LifeLAB events at Ring House, part of Charles E. Smith Life Communities (CESLC). After the event, join us for a tour to learn more about Ring House.

Appraisal Roadshow

Wednesday, April 10 • 3–5 p.m.
Ring House
1801 E Jefferson St.
Rockville, MD 20852

What it's worth? Just like the TV show, an antique and collectible expert will assess your keepsakes for their historical, cultural and financial value. Items or photos of items are welcomed. One item per guest.



Ring House Community Living 101

Zoom Webinar
Tuesday, April 16 • 10–11 a.m.

Learn the details on entrance fee contracts, rental, for-profit vs. non-profit, and how CESLC offers you the best of all possible options.



To RSVP, call
301-381-2702, visit
liveatceslc.org or scan
the QR code.



Charles E. Smith
LIFE COMMUNITIES

www.smithlifecommunities.org



Call and Visit Us at Nu Images Salon in
Leisure World Plaza for the summertime!



20% OFF

for new customers!

Call Us ASAP to get your discount!

Starting July 5, 2023, all color
treatments will be an
additional 10% off for all new
customers thru August 5th,
2023 - **ONE MONTH ONLY!**



Scan for
Google Page

-  **301-598-3000**
-  **Leisure World Plaza**
3810 International Dr
Silver Spring, MD 20906
-  **NulmagesSalon.com**



**Jewish Residents of
Leisure World**
ASK ABOUT SPECIAL FUNERAL
PACKAGE OFFERS AVAILABLE
JUST FOR YOU.

ANDREW LINTHICUM
Director of Advanced Planning
Andrew@Sagelbloomfield.com



**SAGEL
BLOOMFIELD
DANZANSKY GOLDBERG**
FUNERAL CARE INC

VISIT US ONLINE
WWW.SAGELBLOOMFIELD.COM/PRE-ARRANGEMENTS

(301) 340-1400 ☎
1091 Rockville Pike · Rockville, MD 20852
f sagelbloomfieldfunerals

PLAN AHEAD FOR
Peace of Mind.

WE PLAN IN ADVANCE for bar mitzvahs, weddings, retirement and many other life events. So doesn't it make sense to also plan for the inevitable?

For information on pre-planning options and special rates for *Jewish Residents of Leisure World* members, contact **Jamie T. Arthurs** at (240) 463-6884 or Jamie.Arthurs@DignityMemorial.com.



HINES-RINALDI

FUNERAL HOME, INC.
11800 NEW HAMPSHIRE AVENUE
SILVER SPRING

(301) 622-2290
HinesRinaldiFuneralHome.com



TORCHINSKY



HEBREW FUNERAL HOME

The **ONLY** Independent Jewish Family Woman
Owned and Operated Funeral Home in the
Greater Washington Metropolitan Area

Joyce E. Torchinsky, M.S.Ed.

Licensed Funeral Director DC/MD/VA

*“Helping you make plans
120 years in advance...”*

202-541-1001 ✦ 301-495-3395 ✦ 1-800-500-5401

254 Carroll St., NW, Washington, DC 20012

Diagonally across from the Takoma Metro-Red Line

*"For everything there is a season, and a time for every purpose...
...a time to be born, and a time to die..." - Ecclesiastes*



Thirty Washington area congregations have chosen the Garden of Remembrance as their official cemetery.

Visit our beautiful new Memorial Center & Chapel

As a full-service partner to you and your family, in advance or at your time of need, our experienced staff can assist and care for all of your decision-making needs. We provide funerals at graveside, in our new Memorial Chapel, or in our Gazebo, and offer a wide selection of upright, slant, and grass-level granite and bronze memorials.

Please ask about our JRLW discount.



Garden of Remembrance
GAN ZIKARON MEMORIAL PARK

Serving the Jewish Community – One Family at a Time

For more information, call (301) 428-3000, or visit www.gardenofremembrance.org.
14321 Comus Rd., Clarksburg, MD 20871

Love and Remembrance Live Forever

Come visit, and enjoy the many trees, (500+!) gardens, shrubs, art works, and other features that enhance the beauty and meaning of Judean. Our memorial counselors will help you make the right choices.

DID YOU KNOW...? JRLW members are eligible for substantial discounts on burial sites, goods and services. Contact Joel Kristal for your *Discount Voucher!* Call: **240-970-5177**



Shown above: "Abraham" is one of many art works created by artist P. Ratner for Judean

☆ JUDEAN MEMORIAL GARDENS ☆

16225 BATCHELLORS FOREST ROAD
OLNEY MD 20832 | 301-384-1000 | www.judeangardens.com



Hard Hitting. Community Oriented. Substantive. Cultured.

Washington Jewish Week

An essential part of Jewish Life in the Greater Washington area

washingtonjewishweek.com 301.230.2222



Diamond Anniversary Share Certificate

10 Months
Minimum to open: \$500



Signal Financial is celebrating 75 years of serving the community with a special Diamond Anniversary Share Certificate.

Contact the Leisure World branch at 301-933-9100 ext. 422 for more info!

APRIL

Sun	Mon	Tue	Wed	Thu	Fri	Sat
	1 •JRLW Board Meeting 7:30 pm	2 Trip to Theater J	3	4 Shabbat Service 7:30 pm	5	6
7	8	9	10	11	12 7:16	13 Cons. Shabbat Service 9:15 am
14	15 Hadassah Study Group 1:30 pm	16 Hadassah Program	17	18	19 7:23	20
21 JRLW Brunch 10 am	22 EREV PASSOVER SEDER #1	23 PASSOVER DAY 1 SEDER #2	24	25 Passover Day 3	26 7:30	27 Passover Day 5
28 Passover Day 6	29 Passover Day 7	30 •Passover Day 8 •Yizkor Service 9:15 am				

2024



JEWISH RESIDENTS OF LEISURE WORLD

3700 ROSSMOOR BLVD.
SILVER SPRING, MD 20906

NON PROFIT ORG
US POSTAGE
PAID
SUBURBAN, MD
PERMIT NO. 3275

TIME CRITICAL INFORMATION
ADDRESS SERVICE REQUESTED



HAPPY PASSOVER!