



JRLW

MEGILLAH

PLEASE VISIT THE JRLW WEB SITE - www.jrlwmd.org

PRESIDENT: Joel Kristal
photosbj@gmail.com

MEGILLAH EDITOR: Bernice Cohen
bernicecohen1@gmail.com



JOEL L. KRISTAL

FROM THE DESK OF THE PRESIDENT

Joel Kristal

Shalom:

Ma Nishtana? Why is this time of our lives different from any other time in past years? It isn't.

Antisemitism has reared its ugly head, again. Israel (Jews) are being blamed for atrocities in Gaza. Is this another way of blaming Jews for "blood libel"? Our ancestors wandered the desert for 40 years being attacked by various kingdoms, and who but Hashem was there to help? Now, Israel is trying to defend itself and there is only limited support from but a few countries. No country has shown its total commitment for Israel. The United Nations has called for Israel to have a total cease fire while ignoring the plight of the hostages. The UN has ignored the brutality of Hamas much like the world ignored the Nazi brutality against the Jews. The UN wants to impose an arms embargo against Israel. Canada, and perhaps other countries, have decided not to sell weapons to Israel. Once again, the Jews are alone in the desert, fighting for survival.

MAY DATES

- 01 Wed – Hadassah Board
- 02 Thu – JRLW Goes to the Ballgame.
- 03 Fri – Shabbat Service CH II 7:30 pm
- 07 Tue – JRLW Board 7:30 pm
- 09 Thu – Yom Hashoah Musical Program CH I 2:00 pm
- 11 Sat – Shabbat Service CH II 9:15 am
- 13 Mon – JRLW Book Club CH I 11 am
- 16 Thu – JRLW Participates in LW Clubs Event
- 19 Sun – JRLW Brunch CH I 10 am
- 20 Mon – Hadassah Study Group 1:30 pm
- 21 Tue – JRLW/JCC Movie CH II 1:30 pm
- 26 Sun – Lag B'omer
- 29 Wed – Hadassa Program

JRLW BRUNCH

Our next JRLW Brunch will be held on Sunday, May 19, at 10:00 am. The brunch will feature Cantor Caron Dale. She will entertain us with folk, lite rock, spirituals, world music, jazz and familiar songs in English, Hebrew and Yiddish. There will be audience participation.

Tickets will go on sale beginning on April 23, at Clubhouse I. The price is \$21.00, with checks made out to JRLW. This is a MEMBERS ONLY event.

See form in this Megillah.



President's Message

CONTINUED FROM PAGE 1

What can we do?

1) Write your Senators and Representatives telling them to unequivocally support Israel.

2) Make a donation to an Israeli charity. (I like Magen David Adom for emergency medical care).

3) Pray for the State of Israel and Jews everywhere.

As always, an excerpt from Rabbi Lord Jonathan Sachs (of blessed memory) is worth repeating.

Short Thoughts for Pesach

"Pesach is the oldest and most transformative Story ever told. It tells how an undistinguished group of slaves found their way to freedom from the greatest and longest-lived empire of their time, indeed of any time. It tells the history of how the Supreme power intervened in history to liberate the supremely powerless. It is a story of the defeat of probability by the force of possibility. It defines what it is to be a Jew; a living symbol of hope."

Great empires come and go, but we Jews live on. How do we do it? "By the process of handing our story on to the next generation. That is what we do on Pesach. We give the next generation the gift of the Jewish story, and that slender ritual turned out to be longer lasting than the mightiest empires and their greatest monuments."

I started this column in a very somber way and Rabbi Sachs' closing can give us hope that we will persevere.

JRLW OFFICERS

PRESIDENT – Joel Kristal
 ADMIN VP – Al Bodley-Davis
 SECRETARY – Adele Ewing
 TREASURERS – Marsha Bernstein
 Beverly Masters

NOTICE: THE DEADLINE FOR THE JUNE MEGILLAH IS MAY 10. ARTICLES SUBMITTED AFTER THAT DATE WILL APPEAR IN THE JULY MEGILLAH.

MORE THOUGHTS ON KEEPING KOSHER

Shirley Charney Feldman

I grew up in a Jewish home, but we were not 100% kosher. Still, my father, of blessed memory, worked at Silbert's Kosher Market, so we always ate the "best" kosher meats. In 1991, I became an ethical vegetarian as an act of tikkun olam for all the wonderful non-human animals with whom we share our world.

About a year later, I suddenly realized that I now kept kosher - and it was so easy! A wonderful plant-based/vegetarian/vegan diet benefits our own health, the animals who will not be killed to satisfy our palates and our only home – planet earth.

Interested in decreasing your carbon footprint and increasing your intake of meatless meals? There are plenty of Jewish, as well as, non-religious vegetarian/vegan organizations who can provide guidance. Happy kosher eating!

NEW TICKET PURCHASE POLICY FOR JRLW EVENTS

You will now be able to get all JRLW Tickets at Clubhouse I. If there are multiple events, bring a separate check for each event.

You will be able to get all tickets in Clubhouse II except Brunch Tickets. Bring a separate check for each event.

MEGILLAH STAFF

Bernice Cohen – Editor
 Barbara Cronin
 Sharon Freedman
 Marcia Crystal – Food Editor
 Fred Shapiro- Business Mgr.

THE FUTURE OF NEW YORK'S GARMENT DISTRICT

Bernie Ascher ©

Last August, Mayor Eric Adams announced a plan to rezone the area generally known as the Garment District. New York's Economic Development Corporation (EDC) designed the plan to convert unused office space from the declining garment industry to roughly 3,000 apartments to relieve Manhattan's housing shortage. At the same time, the plan proposes preserving at least 300,000 square feet of the district for manufacturing, according to the Associated Press.

The district consists of roughly 42 city blocks between Fifth Avenue and Ninth Avenue, from 34th to 42nd Streets. As recently as the 1960s, factories in the district occupied millions of square feet, producing much of the country's apparel. Today, however, manufacturers use only an estimated 700,000 square feet, according to the city's Economic Development Corporation.

As reported by the Associated Press, "hundreds of thousands of garment workers once toiled in the sweaty, elbow-to-elbow workshops of midtown Manhattan before the whirring of sewing machines was mostly silenced by foreign competition." The COVID-19 pandemic also affected production of the Garment District. Only 5,000 people remain employed in workshops there, mostly serving higher-end designers.

In his book "A History of Jews in America," Howard M. Sachar presents some interesting statistics regarding the significance of the Garment District.

- In 1880, 10 percent of the clothing factories in the United States were in New York City, 90 percent owned by German Jews.

- By 1897 approximately 60 percent of the New York Jewish labor force [worked] in the apparel field, and 75 percent of the workers in the industry were Jewish.

- By 1910 the total had risen to 47 percent, with Jews constituting 80 percent of the hat and cap makers, 75 percent of the furriers, 68 percent of the tailors, and 60 percent of the milliners.

- By 1910 the city was producing 70 percent of the nation's women's clothing and 40 percent of its

men's clothing. In the early 20th century, New York was the largest city and garment production the largest manufacturing business in America.

During the Civil War, Garment District manufacturers supplied army uniforms for soldiers on both sides, according to a 2014 NPR article.

Regardless of the outcome of NY zoning regulations, the Garment District leaves behind bitter-sweet memories of immigrants wheeling loaded clothing racks through bustling streets to waiting trucks, working late hours in overcrowded workshops, making a living in a new place with a different language and new opportunities.

Workers overheard on the street now speak Spanish, Arabic, Chinese, and Korean, with Yiddish still spoken by the Jewish businessmen who once dominated the district.

New York's Garment District already has earned its place in U.S. history, for its contribution to the nation's clothing industry, and its employment of Jewish immigrants.

GOOD AND WELFARE

Mazel Tov to Ruth and Al Temin on the birth of a Great-Grandson, Adam Temin, born on March 14, 2024! Another Mazel Tov: Ruth and Al will be attending the wedding of their grandson, Erez Block Temin, to Orel Rahamim in Tel Aviv on April 9.

Our wishes for a speedy recovery go to Suzy Klein.

Thanks to Rabbi Gary Fink and Cantor Wendy Gonzales for that wonderful, hilarious Purim Service and spiel!

DID YOU REMEMBER TO SEND IN YOUR GRANDPARENTS QVELLS FOR OUR JUNE MEGIAH?



WE REMEMBER



Herbert Jacobowitz.

Elaine Daniels.

Gail Leon.

May Their Memory Be As A Blessing.

CANTOR'S CORNER

Michael Kravitz



Here's hoping you all had a Chag Pesach sameach – a joyous Passover celebration.

This year, 5784 on the Jewish calendar, we observe Yom HaShoah (Holocaust Remembrance Day) on the 28th of Nisan, Monday, May 6, on the Gregorian calendar. For those of you who are looking for special readings and music to commemorate this solemn day, I have several suggestions, and all can be found on the internet. The first is the Holocaust Kaddish where names of the concentration camps are interspersed with the words of the Mourners' Kaddish. You can find it on the internet by going to "Songs and Prayers For Observing Yom HaShoah, Holocaust Remembrance Day." Look for "Kaddish with Names."

The second is sometimes called PARTIZANER LID (Partisans' Song). The words are in Yiddish, written by an inmate of the Vilna ghetto, Hirsch Glick, with melody from an earlier Russian song by Dmitri and Daniel Pokrass. It's a song of the Warsaw ghetto uprising of 1943, and my favorite version is the one sung by Jan Peerce. Type into your browser: "Jan Peerce Sings 'Partizaner' youtube" and the portrait of a female soldier should pop right up. The lyrics and translation can be found by typing in "Zog Nit Keynmol lyrics and translation by Mark Rosenthal." The words and music are still stirring eighty-one years later.

The last one is a hauntingly beautiful piece written and sung by Zola Shuman and is called "Hert Zich Tsu (Listen to Yourself)." The lyrics are in Yiddish and English. Type in "Zola 'Hert Zich Tsu' lyrics." The video I like best has a Jewish star on a blue background and runs for 3:22. The Yiddish at the beginning can be loosely translated as "Listen how we sing to the beat of our hearts with the rhythm of your life. Listen! We are your children. We are singing your song, and because of you, we are all here. Listen. We will remember you." The Yiddish in the middle of the song can be translated as "We will never forget you, we will always remember you. We will sing forever because of you." If you listen to just one piece of music for Holocaust remembrance, I urge you to make it this one.

We also need to remember those brothers and sisters in Israel who were killed on October 7 of last year. At the time this issue of the MEGILLAH went to press, there are hostages who remain in Hamas captivity. We must make every effort to bring them home safely. Ken yehi ratzon (so shall it be)

Be well. Stay safe.

HADASSAH NEWS

Sandy Stein

HEALTHY LIVING MADE EASY

On Wednesday, May 29, at 2 pm in Club House I, the Ruach Chapter of Hadassah will present a program on improving our nutritional goals. The presenter will be Thu Huynh, from the Giant Foods Healthy Living team. Whether you're concerned about heart health, blood sugar or just interested in maximizing your health, learn simple tips to move you towards your wellness goals.

Thu Huynh is a Registered Dietitian (RD) and Licensed Nutritionist (LDN). Born and raised in Montgomery County, she received her Bachelor of Science degree in Dietetics at the University of Maryland, College Park, and her Master's degree in Dietetics Administration (MDA) from Utah State University. She especially loves helping the aging population live their best life.

Please join us for an informative program for improving your nutrition. There will be time for questions. A \$5.00 fee can be paid at the door either by cash or check to Hadassah. Refreshments will be served.

The Judaic Study group will meet in person in Clubhouse I on Monday, May 20, at 2:00 pm. (Note the change in time, and that we will be meeting in person, not on zoom.) The topic will be "Land ownership, Immigration and the History in Palestine, 1880-1948". The pre-founding of the State of Israel program will be led by Shari Goldstein. Door prizes will celebrate Israel's Independence Day. Everyone is welcome to attend.

Hadassah encourages women of any faith to join as an annual or life member. If interested in knowing more about Hadassah, contact Linda Epstein at 301-847-9650.

Hadassah cards for any occasion are available. Contact Elaine Schenberg at 301-598-0079.

THE POWER OF THE LYRIC

Cantor Wendy



cantorwendyg@gmail.com

As we approach Yom Ha-atz-ma-ut, I have heard comments from some of my friends saying that celebratory lyrics for Israel are difficult currently with all the challenges of war and casualties, etc. When we sing songs to celebrate, the lyrics are incorporating the accomplishments and challenges that historically fill our memories.

Whenever I sing ***Bashana Ha-ba-ah***, I always have a tug in my heart knowing that the lyric is trying to help us imagine and hope for a time when Israelis (or any country for that matter) will no longer live in fear while their children play outside and hope that they are safe and can enjoy their world as children should.

When I sing ***Yerushalayim Shel Zahav***, I truly reflect on Naomi Shemer's extraordinary lyrics that bring the beauty of Israel to light for all to enjoy.

Eretz Zavat Chalav U'dvash has a powerful impact as we look at the land of Israel as a land filled with milk and honey. It is sung with vigor and pride and literally comes from Exodus 3:8.

Hey Artzanu is celebrating our joy and pride for Israel and allows us to rejoice.

Should we feel any differently about the lyrics these composers have written or the messages we get from Torah? My personal response is absolutely not!

Throughout history and as time continues, we have had and will have challenges that may make it hard to sing some of these lyrics with gusto, which is all the more reason that we should sing them! It is the struggle and that effort that allows us to not look only at the "now" but also to reflect on the "then" and build the strength and "the hope" (Hatikvah) that will fill our hearts to have faith in the "future."

I look forward to seeing you at our next Erev Shabbat service on Friday, May 3, at 7:30 pm when **Shir Delight** and I will be filling our service for Yom Ha-atz-ma-ut with song and with your voices will bring us together with the joy and hope that we have for generations to come.

TZEDAKAH, KIDDUSH AND ONEG DONATIONS

For information about Tzedakah, Oneg or Kiddush donations, please call Susan Weiss at 301-460-6030. Checks should be made out to JRLW and mailed to Susan Weiss, 3739 Glen Eagles Drive, Silver Spring MD 20906.

TZEDAKAH DONATIONS

Oneg donation by Ellen Goodman to Richard Rothstein, wishing him restored health after his surgery.

Kiddush donation by Barbara Cronin to Bernice Cohen in honor of her special day.

Robin Lisa Rosenberg to Doris Mitnick in memory of her husband, Bud.

Robin Lisa Rosenberg to the Mitnick family in memory of their dad and grandpa.

Melanie Goldstein to Dora Levin in memory of her husband, Marc Levin.

Melanie Goldstein to Carol Mund in memory of her husband, Bob Mund.

Sheila Harnik to Dora Levin in memory of her husband, Marc Levin.

Yahrzeit donation to Shelly Lowinger and Family, in memory of Phyllis Rand.

Bob and Ruthe Kaplan made a donation to Jewish Residents of Leisure World in recognition of the generosity of Florence and David Polinsky.

Susan and Jerry Cohen to Jill Myers and Lisa Daniels in memory of their mother Elaine Daniels.

Norman Salenger in memory of Bob Mund.

Norman Salenger in memory of Harvey Sonin.

Dora Levin made a generous donation to Jewish Residents of Leisure World for the purchase of Shiva books.



RITUAL COMMITTEE

Ellyn Kaufman

Shalom Dear Friends,

May is the month we honor our Mothers. Here are snippets from a few articles I enjoyed reading on the topic of the Jewish Mother.

The top definition of "Jewish Mother" on Urban Dictionary is: "An unstoppable force of nature that will feed you, pamper you, and pester you at the slightest provocation, known to spout Yiddish randomly. *Be warned: if you come to my house, you WILL leave with a full stomach and a bag of leftovers.*"

The Jewish Mother. A stereotype so familiar that the words conjure up a universal caricature: a middle-aged woman with a nasal New York accent and ample bosom, who either sweats over a steaming pot of matzah balls while screaming at her kids from across the house. Or, in an updated version, she sits poolside in Florida, jangling her diamonds and guilt-tripping her grown children into calling her more often. The Jewish mother wants her daughter to marry a Jewish doctor and her son to love her best of all. She is sacrificing yet demanding, manipulative and tyrannical, devoted and ever-present. She loves her children fiercely, but man, does she nag.

What about our Matriarchs.....????

The Patriarchs, Abraham, Isaac and Jacob, were not alone in founding Judaism. At their side at all times were their wives, the Matriarchs, supporting them, bearing their children, and often knowing better than the men what needed to be done.

SARAH Sarah was the first Jewish woman. She was born with the name Sarai (My Princess). Abram often identified Sarai as his sister, rather than his wife, because he was worried that others would murder him to take this wonderful woman if they knew she was his wife.

Sarai was infertile, unable to bear Abram children, though this did not make him love her any less. Nevertheless, Sarai wanted Abram to have children so she encouraged him to have children with her maidservant Hagar as a concubine, again a common thing in those times. Hagar was an Egyptian and was one of the maidservants given to Sarah by Pharaoh. Hagar promptly became pregnant and bore a son for Abram, Ishmael. Abram was 86 when Ishmael was born (Gen. 16:16).

When Abram was 99, G-d made a covenant with him

and changed his name to Abraham and Sarai's to Sarah (Princess). G-d assured Abraham that Sarah, who was 90 by that time, would bear him children. Abraham and Sarah, not surprisingly, doubted this, but sometime later, Sarah bore Abraham's son Isaac. Sarah died at 127 years old in Hebron.

REBECCA Rebecca was the daughter of Bethuel, who was Abraham's nephew. One day, when she was doing her housework filling a water pitcher from a nearby spring, a man came up and asked her for a sip. She was kind enough to give him some water and saw that he had ten thirsty camels so she gave them water too without him even asking. As it turned out, the man seeking water was a servant of Abraham, who had sent him to find a wife for his son Isaac. In fact, the servant had just finished asking G-d to identify the right bride for Isaac by having her give water to him and his camels when Rebecca came out and did so! Her father and brother asked Rebecca if she would go with this man and she said that she would, the first biblical example of a woman deciding for herself whether she wanted to marry a man, albeit agreeing before she met Isaac in person.

Rebecca and Isaac were a true love story. She loved him from the time she first saw him in the field as Abraham's servant was bringing her home. (Gen. 24:64) Rebecca was the only wife Isaac ever had, the only woman he ever had children with. Isaac was the only patriarch who never had any other wife or concubine. They were first cousins once removed, her father being Isaac's first cousin, but that sort of marriage was never forbidden in Jewish law and was actually quite common as recently as the 1800s.

RACHEL Rachel was the daughter of Lavan, Rebecca's brother. She was a shepherd, caring for her father's sheep. Jacob was madly in love with Rachel from the moment he first saw her. He lifted a stone from a well, a task that normally required several men, to provide her flock with water. Lavan offered Jacob wages to work for him, but Jacob wanted only one thing: Rachel. Jacob worked for Lavan for seven years to marry Rachel but it seemed to him like no time at all because he was so much in love.

When the time came for Jacob to marry Rachel ... he was tricked into marrying her older sister Leah! Tradition teaches that Rachel participated in this trick because she knew that her sister was older

Ritual Committee

CONTINUED FROM PAGE 6

and not very attractive and might never attract a man. Jacob was allowed to marry Rachel a week later but had to work an additional seven years for her. Marrying two sisters is forbidden by Torah to avoid rivalry between the sisters but that law had not been given yet. Rachel gave Jacob one last son, Benjamin, but she had a very difficult labor with him and died during childbirth.

LEAH Leah was the daughter of Lavan, Rebecca's brother, and was the older sister of Rachel. Torah tells us that her eyes were weak, but what does this mean? Some sources say that she cried all the time because she feared that she would have to marry the older brother Esau while Rachel married the younger brother Jacob, and she heard such horrible things about Esau. Leah is contrasted with Rachel, who is described as shapely and beautiful.

Leah was still unmarried after Jacob worked for seven years to win Rachel, and there was concern that she would never marry, so Lavan (possibly in coordination with Rachel) tricked Jacob into marrying Leah. This trick did not go well for her, because Jacob did not love Leah. The Torah even says that she was hated (Gen. 29:31), though tradition teaches that this "hatred" was only how she felt relative to how much Jacob loved Rachel.

Unlike most of the matriarchs, Leah was very fertile, and bore Jacob some of his most important sons. She bore Reuben (Jacob's firstborn), Simeon, Levi (the ancestor of Moses and of the kohanim and of Levites), Judah (ancestor of King David), Issachar and Zebulun. She also bore him Dinah, one of the few female children mentioned in the Bible, mentioned because she appears later when she is raped by a prince of another land leading to ugly revenge. Leah died at some point before the Jacob's family went to Egypt and was buried in the cave of Machpelah with Abraham, Sarah, Isaac and Rebecca.

Our Mothers are a special breed, to be loved, cherished and honored not only on Mother's Day, but everyday!

To all the Mothers out there – Happy Mother's Day!

Kol tuv, All the best,

Ellyn Becker Kaufman
Chair, Ritual Committee
ellynsu@verizon.net

TORAH and PRAYER BOOK FUNDS

Individuals can be honored and loved ones memorialized with a contribution to the JRLW Torah or Prayer Book Fund for a minimum donation of \$25.00.

PRAYER BOOK FUND

If you would like to make a donation in honor of or in memory of someone in a Reform prayer book, Conservative Prayer book or a Chumash (Bible), please stipulate which one in your request. Please send your requests to donate prayer books to Florence Kasden, 3100 Leisure World Boulevard, #610, Silver Spring MD 20906. Her phone number is 410-251-9382.

A donation of a Conservative Prayer Book was made in memory of Ethel Waltzer by the Monday Morning Mah Jongg Group.



TORAH FUND

For contributions to the Torah Maintenance Fund, send your check, made out to JRLW, to Carol Wendkos, 14805 Pennfield Circle, #212, Silver Spring, MD 20906.



RELIGIOUS SERVICES FOR MAY 2025

On Friday, May 3, we will have an evening Shabbat Service in Clubhouse II at 7:30 pm. These Services will be conducted by Rabbi Gary Fink and Cantor Wendy Gonzales. Shir Delight will provide their beautiful voices. An Oneg will follow the Service.

There will be a Conservative Shabbat Service on Saturday, May 11, in Clubhouse II at 9:15 am. Cantor Mike Kravitz will conduct the Service. There will be a Kiddush following the Service.



PROGRAM AND EDUCATION

Becky Siman

Thursday, May 2, Bus Trip to see the Orioles vs the Yankees at Camden Yards. Call Sue Sandler on 301-219-4449 to see if there are still tickets available.

Thursday May 9, 2 p.m. Crystal Ballroom, Club House I- Yom HaShoah Concert: We Remember, sponsored by JRLW and Bender JCC Coming of Age. Join the Iris Piano Trio and Yiddish vocalist Frieda Enoch for an afternoon of music commemorating Yom HaShoah - Holocaust Remembrance Day. The musicians present beautiful music that showcases the power of the human spirit despite the darkest of days. Against all odds, faith, hope and music have always emboldened us and made us more resilient. Tickets can be purchased at Clubhouse I or Clubhouse II for \$15 by check made out to JRLW from April 9 to May 8 and at the door. See the flyer for more details.

Tuesday, May 21, Auditorium, Clubhouse II, 1:30 pm: A documentary film, *Remembering Gene Wilder*. Sponsored by Bender JCC and JRLW.

THIS FILM IS BEING SHOWING AT MANY JEWISH FILM FESTIVALS

Few comedic actors have left a more indelible mark on our culture than Gene Wilder, whose performances in such classics as *The Producers*, *Young Frankenstein*, and *Silver Streak* made him one of the most beloved stars of his era. This heartfelt documentary takes a close look at the life and career of an American original, starting with his Jewish upbringing in Milwaukee. He was known as an all-around mensch. He passed away in 2016. Tickets will be available at Clubhouse I and Clubhouse II for \$10 made out to JRLW from April 23 through May 20. It will be \$12 at the door. The film is 90 minutes. See the flyer for more details.6

Thursday, June 6, 13th Annual "TO LIFE" HEALTH AND WELLNESS EXPO 10 am – 2 pm.

Clubhouse II Sponsored by JCC Coming of Age and the Jewish Residents of Leisure World. Come to this free, annual program which highlights health screenings, vaccines – Covid and others, workshops, photos, "Head to Toe" massage, and many social and community organizations. Take a chance on fabulous raffle prizes and the grand prize of an Apple Ipad. See the flyer.

Thursday, June 6, Grand Expo Finale – Clubhouse II Auditorium, 3 pm. The Magical Mystery Girls: A Beatles Tribute. Take a trip down memory land with the Magical Mystery Girls, a female Beatles tribute band. Tickets are \$15 in advance and \$18 at the Expo. Tickets can be purchased May 7 through June 5, at Clubhouse I or Clubhouse II by check made out to JRLW. Don't miss this performance.

Monday, June 10, 1:30 - 3:00 PM, Ice Cream Social -Parking Lot Behind Clubhouse II near Tennis Courts - Free while ice cream lasts. Kick off the summer and celebrate the Shavuot holiday with Coming of Age and JRLW. Say hello and schmooze while you cool down with a sweet treat. There will be some chairs, but feel free to bring one, too. This is a private event for JRLW and Coming of Age Members, not the general Leisure World population. Please do not invite others from the activities you might be attending such as Scrabble, Mah Jongg, tennis, etc.

MEMBERSHIP COMMITTEE

Linda Nelson, Nancy Grossman

The heart and soul of JRLW is our membership supporting religious, educational and social activities. JRLW takes hate crimes and antisemitism seriously and provides security for most of our events. We need membership to support our concerns and safety.

JRLW membership is from January 1 – December 31, 2024. To be a member in good standing and continue to receive the Megillah we must receive new and current members by May 31.

The membership form is included in this month's Megillah and can be found online at www.jrlwmd.org.

Let's keep JRLW strong by renewing your membership!

If you have any questions regarding membership don't hesitate to contact me.

Have a wonderful May. I look forward to seeing you at many of our JRLW events.

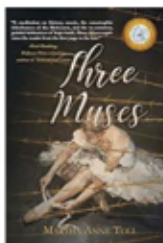
Linda Nelson – lpnerson3@comcast.com
301-922-1793.

JEWISH RESIDENTS OF LEISURE WORLD BOOK CLUB SCHEDULE

May 13, 10 am – 12 Noon MODERATOR: MATHA ANN TOLL
 AUTHOR: MARTHA ANN TOLL
 Potomac Room CH I

THREE MUSES

Three Muses is a love story that enthralls a tale of Holocaust survival venturing through memory, trauma and identity while raising the curtain on the unforgiving discipline of ballet.



July 8, 10 am – 12 Noon MODERATOR: BECKY SIMAN
 AUTHOR: JENNIFER ROSNER
 Potomac Room CH I

ONCE WE WERE HOME

Once We Were Home reveals a little-known history. Based on the true stories of misplaced WW II children stolen during wartime and return to their roots. This heart-wrenching novel raises questions of complicity and responsibility, belonging and identity, good intentions and unforeseen consequences, as it confronts what it really means to find home.



FOR FURTHER INFORMATION CONTACT STEVE COHEN AT 301-667-3099 OR
STEVECOHENJD@GMAIL.COM.

We are still looking for moderators.

RECIPE CORNER

BAKED TUNA BALLS

Marcia Crystal

1 5-oz can of tuna, drained

1 egg, beaten

½ cup dry bread crumbs

2 tablespoons chopped onion

2 tablespoons chopped parsley

2 tablespoons chopped almonds

3 tablespoons mayonnaise

1 teaspoon mustard

½ teaspoon seasoning, such as Dash

3 tablespoons melted margarine

½ cup crushed cornflakes



Preheat oven to 450°. Mix above ingredient together, except for melted margarine and the crushed cornflakes. Mix well. Shape into small balls. Dip into melted margarine; then dip into crushed cornflakes. Arrange on a lightly greased baking sheet. Bake 15 minutes or until lightly browned.

WE WELCOME NEW MEMBER

Joseph Joyner
3411 St. Leonard's Court
Silver Spring, MD 20906-1344

James and Nancy Belknap
3005 S. Leisure World Blvd., #215
Silver Spring MD 20906

Lenore Donner
3200 N. Leisure World Blvd., #309
Silver Spring, MD 20906

Jane Raucher
3200 N Leisure World Blvd., #616
Silver Spring, MD 20906

NEW LIFE MEMBERS

Judith Blate
15107 Interlachen Drive, #305
Silver Spring, MD 20906-5628

William Stein
3603 Gleneagles Drive, #1A
Silver Spring, MD 20906-1620

Mildred White
2901 S Leisure World Blvd., #106
Silver Spring, MD 20906

JRLW MEMBERSHIP

As announced in the November Megillah, we are changing our fiscal year to January 1 – December 31. We are asking that you pay your dues for 2024 any time between January 1, 2024 – May 31, 2024. Whatever date you choose, your payment will be good for all of 2024.

Please Note – In order to attend our “Members Only” Events – such as the brunches, you must be a member.

Please fill out the form below so we can make sure your information is correct. Make your check payable to JRLW. You can either drop the check off in the mailbox in Clubhouse I or mail it to the address below.

**BEVERLY MASTERS – JRLW
3378 Chiswick Ct., # 2E
Silver Spring, MD 20906**

_____ Individual (\$25) _____ Couples (\$45) _____ Life* _____ New Member

Name: _____

If all the information below is the same as last year, just put SAME

Address: _____

Phone Number: _____

Email Address: _____

We ask for your email address so we can send you important and time-sensitive messages

***LIFE MEMBER**

You may also want to consider becoming a Life Member. Life Membership is a way of showing support and commitment to JRLW. It also means you do not have to pay your annual dues in the future. The chart below, based on age, shows the cost of Life Membership, **per person**.

AGE	COST (per person)
64 and under.....	\$375
65-69	\$300
70-74	\$285
75-79	\$225
80-84	\$175
85+	\$100



Jewish Residents of Leisure and the Bender JCC Coming of Age

**Thursday, May 9, 2 p.m.
Clubhouse I Crystal Ballroom**

Yom HaShoah Concert: We Remember



Join the Iris Piano Trio and Yiddish vocalist Frieda Enoch for an afternoon of music commemorating Yom HaShoah - Holocaust Remembrance Day. The musicians present beautiful music that showcases the power of the human spirit despite the darkest of days. Against all odds, faith, hope and music have always emboldened us and made us more resilient.

The Iris Piano Trio, composed of pianist Jiyoung Oh, violinist Joanna Owen and cellist Lauren Latessa, performs all over the Mid Atlantic area, bringing joy to the audiences.

Frieda Enoch: Frieda Enoch is the Director of Bender JCC's Coming of Age (COA) Adult Engagement Program. Both of Frieda's parents were survivors of the Holocaust and Yiddish was the primary language spoken at home when she was growing up. She sings today in honor of her parents' legacy. She is on a mission to keep this beautiful language and musical tradition alive!

**Pick up your \$15 ticket at the Lifestyle Office in Clubhouse I
from April 9 to May 8. Make checks payable to JRLW.**

JRLW Sunday Brunch

May 19th at 10:00am

Piece by Peace by Caron Dale

A Concert Performance by Cantor Dale with Tastes of Folk, Lite Rock, Spirituals, World Music, Jazz & Familiar Songs in English, Hebrew and Yiddish with Audience Participation!!!

Crystal Ballroom, Clubhouse I
Includes Full Sunday Brunch Buffet

Price is \$21.00 per person (MEMBERS ONLY!!)

✓ Make checks payable to JRLW

Pay by check only at the Clubhouse I Lifestyle office

Tickets are available for purchase

April 23 to May 13 at Clubhouse I

- ✓ We will place you at a reserved table. If there are other members with whom you would like to sit (tables of up to 10), please list them.
- ✓ All seats must be paid for at the time of purchase to reserve a table or partial table. Only checks accepted for payment. No refunds on tickets. No tickets will be sold after the cutoff date.

Name(s):

Phone Number:

Email Address (Optional):

- ✓ Please bring this form with you to purchase your tickets.
- ✓ Seat assignments will be given at the reception/check-in tables beginning at 9:30am.



**Jewish Residents of Leisure and the
Bender JCC Coming of Age**

**Tuesday, May 21, 1:30 p.m.
Clubhouse II Auditorium**

Remembering Gene Wilder



Few comedic actors have left a more indelible mark on our culture than Gene Wilder, whose performances in such classics as *The Producers*, *Young Frankenstein*, and *Silver Streak* made him one of the most beloved stars of his era.

This enrapturing and heartfelt documentary takes a close look at the life and career of this American original, from his Jewish upbringing in Milwaukee, to his early stage work, to his breakthrough collaborations with Mel Brooks and Richard Pryor, to his marriage to Gilda Radner and beyond. Using a variety of touching and hilarious clips and outtakes; never-before-seen home movies; narration from Wilder's audiobook memoir; and interviews from a roster of brilliant collaborators including among other, Mel Brooks, and Peter Ostrum, who portrayed Charlie in one of Gene's most memorable roles, *Willy Wonka and the Chocolate Factory*. This film shines a light on an essential performer, writer, director, and all-around mensch. This documentary was made in 2023 in English, and is 90 minutes.

Tickets will be available at Clubhouse II Lifestyle Office from April 23 – until May 20. Tickets are \$10 in advance and \$12 at the door. CHECKS ONLY MADE OUT TO JRLW.

June 2024 Programs

June 6, 2024, 10 a.m. – 2 p.m. Health and Wellness Expo, Clubhouse I



The Bender JCC Coming of Age's annual, highly anticipated Expo is designed to engage, educate, and empower attendees to make choices and take actions to maintain a healthy and happy lifestyle. This event provides the opportunity to connect with health and wellness providers to learn about their products and services, advancing our mission to help senior adults 'age-in-place' and 'in-community' successfully.

Update your vaccinations, take photos with friends, attend wellness workshops and screenings, get a massage, meet local vendors. Lots of great raffle prizes, hair dressers, trips, restaurants, and more.

Plan to spend a couple of hours experiencing this once-a-year event and then attend Magical Mystery Girls Finale. There is no charge to attend the Expo in Clubhouse I.

June 6, 3 p.m. Health and Wellness Expo Finale: Magical Mystery Girls, Clubhouse II Auditorium



Cap off the day with a trip down musical memory lane. The Beatles' timeless tunes service as a sonic remedy, bringing joy and nostalgia into our lives enhancing wellness with every infectious melody. The Magical Mystery Girls are an all-female Beatles tribute band playing note-for-note renditions of Beatles' songs.

Tickets on sale at Clubhouse I and Clubhouse II LifeStyle offices May 7 to June 5. Tickets are \$15 in advance and \$18 at the Expo. Make out checks to JRLW.

Monday, June 10, 2024

**JRLW/JCC Ice Cream Social 1:30 p.m. – 3p.m.
Clubhouse II Parking Lot near Gazebo at Tennis Courts.**



Join JRLW and JCC Coming of Age to celebrate Shavuot, say hello, catch up, and enjoy some delicious ice cream! Stay and schmooze while you cool down with a sweet treat. A limited numbers of chairs will be available, so please bring your own if you would like. A sugar free option will be available. JRLW Members and COA members only.

Cost: FREE – no registration required.

Let Your Bright Life SHINE



At Brightview Senior Living, we do it right. Activities and entertainment are available all day, every day. Great dining in a variety of venues is within reach – so no driving (or cooking) is required. Friends and neighbors are always nearby, so isolation is never an issue. A dedicated staff provides support, if it's needed, and takes care of all those pesky chores.

We invite you to explore our gorgeous community, where happy, longtime associates, a vibrant lifestyle, and personalized support empower area seniors to *live brightly*.

Independent Living | Assisted Living | Dementia Care | Enhanced Care
Schedule Your Visit Today.

BRIGHTVIEW
 SENIOR LIVING

www.BrightviewSeniorLiving.com

**Exceptional Living.
 We're in the Neighborhood.**



BETHESDA

Brightview Grosvenor | 301.615.0119
 Brightview Woodmont | 866.838.2380

ROCKVILLE

Brightview Falls Grove | 855.716.3836
 Brightview West End | 855.431.3475



*Let Your
Bright Life*
SHINE



Brightview's award-winning communities make life extra bright for area seniors and their families.

We invite you to explore our gorgeous communities, get to know our teams, and discover how Brightview's personalized services, support, and enriching lifestyle can make life brighter for you, too.

Independent Living | Assisted Living | Dementia Care | Enhanced Care
Schedule Your Visit Today.

BRIGHTVIEW
SENIOR LIVING

www.BrightviewSeniorLiving.com

**Exceptional Living.
We're in the Neighborhood.**



BETHESDA

Brightview Grosvenor | 301.615.0119
Brightview Woodmont | 866.838.2380

ROCKVILLE

Brightview Falls Grove | 855.716.3836
Brightview West End | 855.431.3475



Leisure World trusts **Family & Nursing Care**



As a premier resource for in-home care services, Family & Nursing Care helps families rest easy, knowing their loved ones are well supported. From that first cup of coffee in the morning to a sacred bedtime ritual to an unexpected need in the middle of the night, **we are here for you.**

To learn more, come meet **Kelly** and **Jeff** in our office in the Leisure World Medical Center.



3305 N. Leisure World Blvd. familynursingcare.com (301) 588-8200

REHABILITATION

RETURN TO THE LIFE YOU LOVE

Brooke Grove Rehabilitation and Nursing Center's innovative place to heal and revitalize is simply different from any other option in the region.

A STATE-OF-THE-ART REHAB CENTER

Fully dedicated to short-term rehab • Two-story physical therapy gym bathed in sunlight • Leading-edge therapies for faster healing • Expansive guest rooms with luxury bathrooms • Restaurant-style dining with sunset views • Fireside gathering places • Covered porches, courtyard garden and walking trails • Salon • Spa with massage room and soaking tub

SIMPLY DIFFERENT ...
BECAUSE WHAT SURROUNDS YOU **REALLY MATTERS.**



BROOKE GROVE
RETIREMENT VILLAGE

18100 Slade School Road
Sandy Spring, MD 20860

301-637-8928
www.bgf.org



INDEPENDENT LIVING ASSISTED LIVING REHABILITATION
LONG-TERM CARE MEMORY SUPPORT

HOSPICE



ESCORTED
TRANSPORTATION



IN-HOME
SUPPORT



CARE
COORDINATION



MENTAL
HEALTH



jssa

Medicare and Most Major
Insurance Accepted.

JSSA.org

JSSA is the trusted health and social wellness agency that helps neighbors and their families through their most vulnerable moments with warmth and acceptance.

Everyone needs support at some point. Our goal is to make essential care and quality of life accessible to everyone.



Partner Agency of
The Jewish Federation
OF GREATER WASHINGTON



Call us at 240-800-JSSA to find
out how we can help.



 **THE DENTAL OFFICE AT LEISURE WORLD**
301-598-1015

CARMEN LANIO DEVRIES, DDS



**OPEN FOR
ROUTINE CARE**

Conveniently located in the
Leisure World Medical Center



**ACCEPTING NEW
PATIENTS**



Enhanced Safety Protocols

- ✓ Dedicated entrance for dental patients
- ✓ Temperature checks
- ✓ Masks required for entry
- ✓ HEPA air purifiers
- ✓ Augmented PPE for staff

3305 N. LEISURE WORLD BLVD
SILVER SPRING, MD 20906

ABOUT US

As a part of the Leisure World community for over 40 years, our conservative practice philosophy focuses on prevention and maintaining health and function. We cater exclusively to older adults.

INDEPENDENT LIVING at Ring House

LIVE FULLY

Enjoy the ease, comfort and privacy of your own affordable apartment and thrive in the vibrant, active lifestyle that's right outside your door.

Independent living at Ring House invites you to live fully, enjoying new friendships, new experiences and new discoveries. All with the peace of mind of seamless access to onsite continuing care.



**Call today to begin
your full life.
301-476-4390**



SmithLifeCommunities.org | 1801 E. Jefferson St. | Rockville, MD 20852



WARREN R. SLAVIN Post-Acute Care Center

WE'LL GET YOU WHERE YOU WANT TO GO - HOME.

Following an illness, surgery or injury, the only thing you want to do is recover and get back to your life.

We'll help you get there.

With comfortable, private accommodations and a team of over 30 experienced therapists, it is no wonder that so many of our short-stay patients achieve one of their greatest goals - going home.



**Call today to begin
your experience.
301-770-8496**



SmithLifeCommunities.org | 1801 E. Jefferson St. | Rockville, MD 20852



Complimentary Events for Positive Aging

Rockville's most interesting 62+ community invites you to LifeLAB events at Ring House, part of Charles E. Smith Life Communities (CESLC). After the event, join us for a tour to learn more about Ring House.



Gardening Extravaganza: Container Garden Workshop

May 16, 2024 • 11 a.m. Ring House

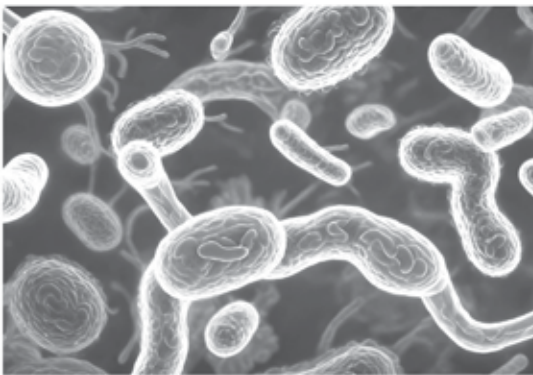
Join us to inaugurate our Gardening Club. Learn tips for container gardening from a landscaping expert. Connect with other enthusiasts and novices interested in gardening.



Wealth Wisdom: Empowered Financial Strategies for Retirement

June 12, 2024 • 10 a.m. Zoom Webinar

Join us in a discussion with Alex Seleznev, founder and president of Capital Squared Financial, to discuss financial strategies pre and post-retirement.



Your Gut Microbiome: The Secret to Longevity and Health

June 27, 2024 • 11 a.m. Ring House

Dr. Matthew Mintz will discuss the link between your gut microbiome and healthy aging.

To RSVP, call 301-381-2702, visit liveatceslc.org or scan the QR code.



Charles E. Smith
LIFE COMMUNITIES

www.smithlifecommunities.org



Call and Visit Us at Nu Images Salon in
Leisure World Plaza for the summertime!



20% OFF

for new customers!

Call Us ASAP to get your discount!

Starting July 5, 2023, all color
treatments will be an
additional 10% off for all new
customers thru August 5th,
2023 - **ONE MONTH ONLY!**



Scan for
Google Page

-  **301-598-3000**
-  **Leisure World Plaza**
3810 International Dr
Silver Spring, MD 20906
-  **NulmagesSalon.com**



**Jewish Residents of
Leisure World**
ASK ABOUT SPECIAL FUNERAL
PACKAGE OFFERS AVAILABLE
JUST FOR YOU.

ANDREW LINTHICUM
Director of Advanced Planning
Andrew@Sagelbloomfield.com



**SAGEL
BLOOMFIELD
DANZANSKY GOLDBERG**
FUNERAL CARE INC

VISIT US ONLINE
WWW.SAGELBLOOMFIELD.COM/PRE-ARRANGEMENTS

(301) 340-1400 ☎
1091 Rockville Pike · Rockville, MD 20852
f sagelbloomfieldfunerals

PLAN AHEAD FOR
Peace of Mind.

WE PLAN IN ADVANCE for bar mitzvahs, weddings, retirement and many other life events. So doesn't it make sense to also plan for the inevitable?

For information on pre-planning options and special rates for *Jewish Residents of Leisure World* members, contact **Jamie T. Arthurs** at (240) 463-6884 or Jamie.Arthurs@DignityMemorial.com.



HINES-RINALDI

FUNERAL HOME, INC.
11800 NEW HAMPSHIRE AVENUE
SILVER SPRING

(301) 622-2290
HinesRinaldiFuneralHome.com



TORCHINSKY



HEBREW FUNERAL HOME

The ONLY Independent Jewish Family Woman
Owned and Operated Funeral Home in the
Greater Washington Metropolitan Area

Joyce E. Torchinsky, M.S.Ed.

Licensed Funeral Director DC/MD/VA

*“Helping you make plans
120 years in advance...”*

202-541-1001 ✦ 301-495-3395 ✦ 1-800-500-5401

254 Carroll St., NW, Washington, DC 20012

Diagonally across from the Takoma Metro-Red Line

*"For everything there is a season, and a time for every purpose...
...a time to be born, and a time to die..." - Ecclesiastes*



Thirty Washington area congregations have chosen the Garden of Remembrance as their official cemetery.

Visit our beautiful new Memorial Center & Chapel

As a full-service partner to you and your family, in advance or at your time of need, our experienced staff can assist and care for all of your decision-making needs. We provide funerals at graveside, in our new Memorial Chapel, or in our Gazebo, and offer a wide selection of upright, slant, and grass-level granite and bronze memorials.

Please ask about our JRLW discount.



Garden of Remembrance
GAN ZIKARON MEMORIAL PARK

Serving the Jewish Community – One Family at a Time

For more information, call (301) 428-3000, or visit www.gardenofremembrance.org.
14321 Comus Rd., Clarksburg, MD 20871

Love and Remembrance Live Forever

Come visit, and enjoy the many trees, (500+!) gardens, shrubs, art works, and other features that enhance the beauty and meaning of Judean. Our memorial counselors will help you make the right choices.

DID YOU KNOW...? JRLW members are eligible for substantial discounts on burial sites, goods and services. Contact Joel Kristal for your *Discount Voucher!* Call: **240-970-5177**



Shown above: "Abraham" is one of many art works created by artist P. Ratner for Judean

☆ JUDEAN MEMORIAL GARDENS ☆

16225 BATCHELLORS FOREST ROAD
OLNEY MD 20832 | 301-384-1000 | www.judeangardens.com



Hard Hitting. Community Oriented. Substantive. Cultured.

Washington Jewish Week

An essential part of Jewish Life in the Greater Washington area

washingtonjewishweek.com 301.230.2222



Diamond Anniversary Share Certificate

10 Months
Minimum to open: \$500



Signal Financial is celebrating 75 years of serving the community with a special Diamond Anniversary Share Certificate.

Contact the Leisure World branch at 301-933-9100 ext. 422 for more info!

MAY

<i>Sun</i>	<i>Mon</i>	<i>Tue</i>	<i>Wed</i>	<i>Thu</i>	<i>Fri</i>	<i>Sat</i>
			1 Hadassah Board	2 JRLW Goes to the Ballgame!	3 Shabbat Service CH II 7:30 pm	4
5	6 JRLW Board Meeting 7:30 pm	7	8	9 YOM HASHOAH Musical Program 2:00 pm	10 7:43	11 Shabbat Service 9:15 am
<i>Mother's Day</i>	13 JRLW Book Club CH I 11 am	14	15	16 Participating in LW Clubs Event	17 7:50	18
JRLW Brunch CH I 10 am	20 Hadassah Study Group 1:30 pm	21 JRLW/JCC Movie CH II 1:30 pm "Remembering Gene Wilder"	22	23	24 7:56	26
Lag B'Omer	27	28	29 Hadassah Program	30	31	

2024



JEWISH RESIDENTS OF LEISURE WORLD

3700 ROSSMOOR BLVD.
SILVER SPRING, MD 20906

NON PROFIT ORG
US POSTAGE
PAID
SUBURBAN, MD
PERMIT NO. 3275

TIME CRITICAL INFORMATION
ADDRESS SERVICE REQUESTED

***APRIL FLOWERS BRING MAY
FLOWERS!***

